

JOB SEARCH EXPERIENCE

AUSTRALIA

EMBARGO: 11.30AM (CANBERRA TIME) MON 21 DEC 2009

C O N T E N T S

	<i>page</i>
Notes	2
Conceptual framework	3
Summary of findings	4

T A B L E S

List of tables	10
Unemployed persons, and employed persons who started their current job in the previous 12 months	12
Unemployed persons	14
Employed persons who started their current job in the previous 12 months	21
Employees (excluding owner managers of incorporated enterprises) who started their current job in the previous 12 months	23
Populations	26

A D D I T I O N A L I N F O R M A T I O N

Explanatory Notes	27
Appendix 1: Classification of education	30
Appendix 2: Populations and data items list	32
Appendix 3: Supplementary surveys	39
Technical Note: Data quality	40
Glossary	44

I N Q U I R I E S

For further information
about these and related
statistics, contact the
National Information and
Referral Service on
1300 135 070 or Labour
Market Statistics Section
on Canberra
(02) 6252 7206.

NOTES

ABOUT THIS PUBLICATION

This publication presents information about the experiences of unemployed people in seeking work, in terms of the steps they have taken to find work and the difficulties they have encountered in finding work. It also presents information about employed people who started their current job in the previous 12 months. For this group, data on the steps taken to attain work and current job details are provided. In addition, demographic information is provided for both of these groups.

The statistics in this publication were compiled from data collected in the Job Search Experience Survey, conducted throughout Australia in July 2009 as a supplement to the Australian Bureau of Statistics (ABS) monthly Labour Force Survey (LFS).

CHANGES IN THIS ISSUE

As of July 2009, the name 'Job Network' changed to 'Job Services Australia'. This publication uses 'Job Network' and will incorporate the name change for the 2010 issue.

A new data item 'Number of children in family aged under 15 years' was added in 2009.

ROUNDING

As estimates have been rounded, discrepancies may occur between sums of the component items and totals.

.....

ABBREVIATIONS

'000	thousand
ABS	Australian Bureau of Statistics
ABSCQ	Australian Bureau of Statistics Classification of Qualifications
ANZSCO	Australian and New Zealand Standard Classification of Occupations
ANZSIC	Australian and New Zealand Standard Industrial Classification
ASCED	Australian Standard Classification of Education
ASCO	Australian Standard Classification of Occupations
LFS	Labour Force Survey
n.f.d.	not further defined
OMIE	owner manager of incorporated enterprise
RSE	relative standard error
SACC	Standard Australian Classification of Countries
SE	standard error
wks	weeks

Brian Pink
Australian Statistician

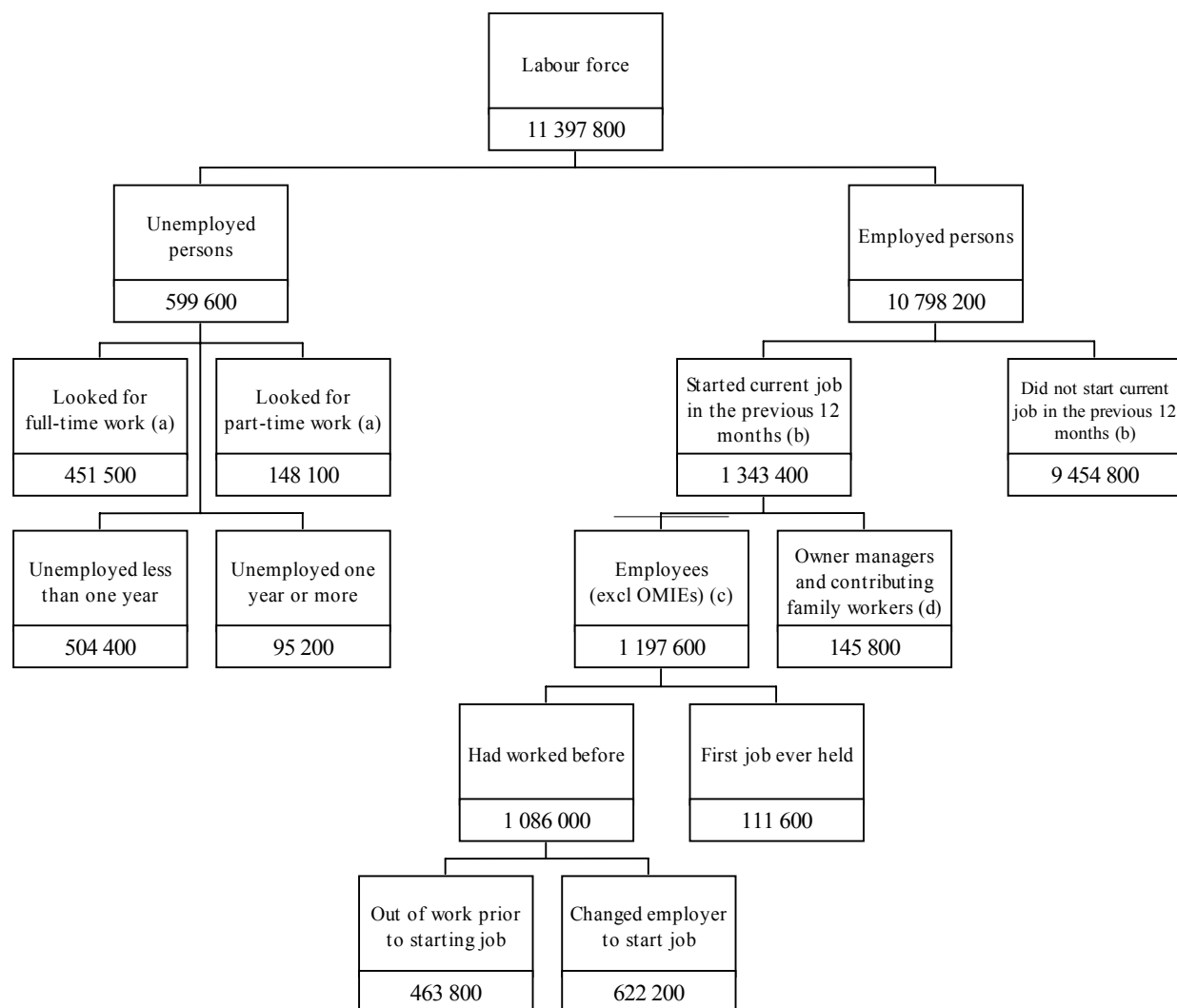
CONCEPTUAL FRAMEWORK

CONCEPTUAL FRAMEWORK

The following diagram illustrates the conceptual framework for the 2009 Job Search Experience Survey. It presents two mutually exclusive groups in the labour force as at July 2009:

- unemployed persons
- employed persons who started their current job in the previous 12 months.

In July 2009, there were 599,600 unemployed people, and 1.3 million employed people who had started their current job in the previous 12 months.



(a) See Glossary for definition of unemployed looking for full-time or part-time work.

(b) See Glossary for definition of current job.

(c) Owner managers of incorporated enterprises.

(d) Includes owner managers of incorporated enterprises and owner managers of unincorporated enterprises.

SUMMARY OF FINDINGS

OVERVIEW

In July 2009, there were 599,600 unemployed people comprising 345,200 (58%) men and 254,400 (42%) women. The median duration of unemployment increased from 11 weeks in July 2008 to 16 weeks in July 2009.

Three-quarters (75%) of unemployed people were looking for full-time work with nearly two-thirds (64%) of these being men. Women accounted for 61% of people looking for part-time work. Of unemployed men, 83% were looking for full-time work, while 36% of unemployed women were looking for part-time work. More than half (56%) of unemployed people were without a non-school qualification, while 14% reported their highest level of non-school qualification was a Bachelor Degree or above. The majority (57%) of unemployed people were aged between 15 and 34 years.

There were approximately 1.3 million job starters (employed people who had started their current job in the previous 12 months) at July 2009. Nearly two-thirds (65%) of job starters were working full-time. There were 59% of job starters with a non-school qualification, of which 43% had a Bachelor Degree or above.

UNEMPLOYED PEOPLE

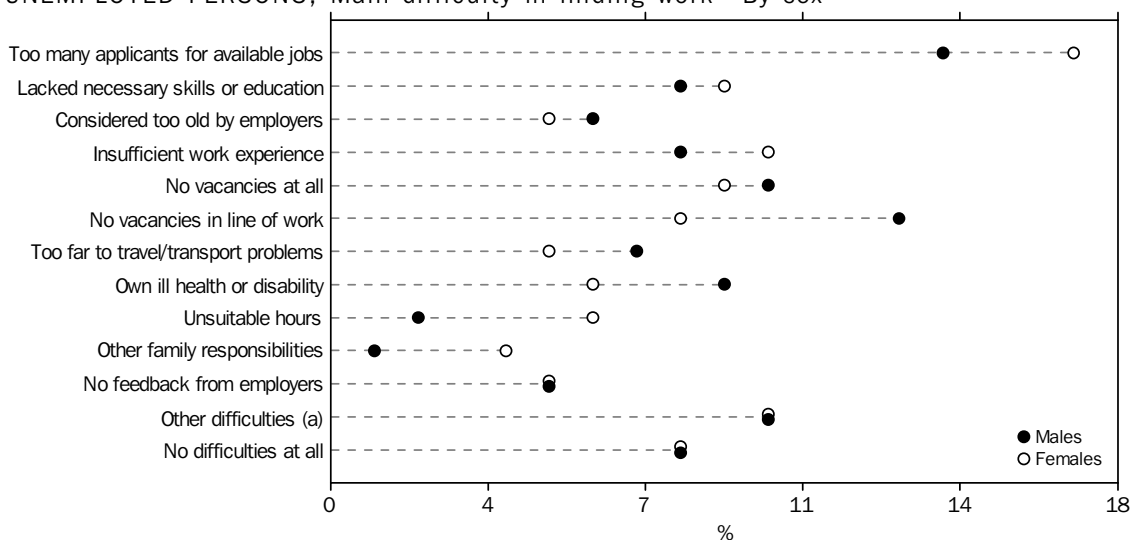
Duration of unemployment

The majority (84%) of unemployed people had been unemployed for less than one year. Under half (45%) of people who had been unemployed for less than 1 year had a non-school qualification. This compares with 39% who had been unemployed for more than 1 year.

Difficulties in finding work

For unemployed people, the most commonly reported main difficulty in finding work was 'too many applicants for available jobs' (15%) followed by 'no vacancies in line of work' (11%).

UNEMPLOYED PERSONS, Main difficulty in finding work—By sex



(a) Includes people who reported 'considered too young by employers', 'language difficulties', 'difficulties with finding child care' or 'difficulties because of ethnic background'.

SUMMARY OF FINDINGS *continued*

Difficulties in finding work continued

The difficulties in finding work for unemployed people varied with whether they were men or women, what age they were, how long they have been unemployed and what type of work they were looking for (full-time or part-time).

The most common main difficulty in finding work reported by unemployed men was 'too many applicants for available jobs' (14%). The next most common difficulties reported by men were 'no vacancies in line of work' (13%) and 'no vacancies at all' (10%). In comparison, for women the most common main difficulty was 'too many applicants for available jobs' (17%). This was followed by 'insufficient work experience' (10%).

For long-term unemployed people, the main difficulty reported was 'own ill-health or disability' (16%) followed by 'too many applicants for available jobs' and 'insufficient work experience' (both 12%). However, people who had been unemployed for less than 1 year most commonly reported 'too many applicants for available jobs' (15%) as their main difficulty.

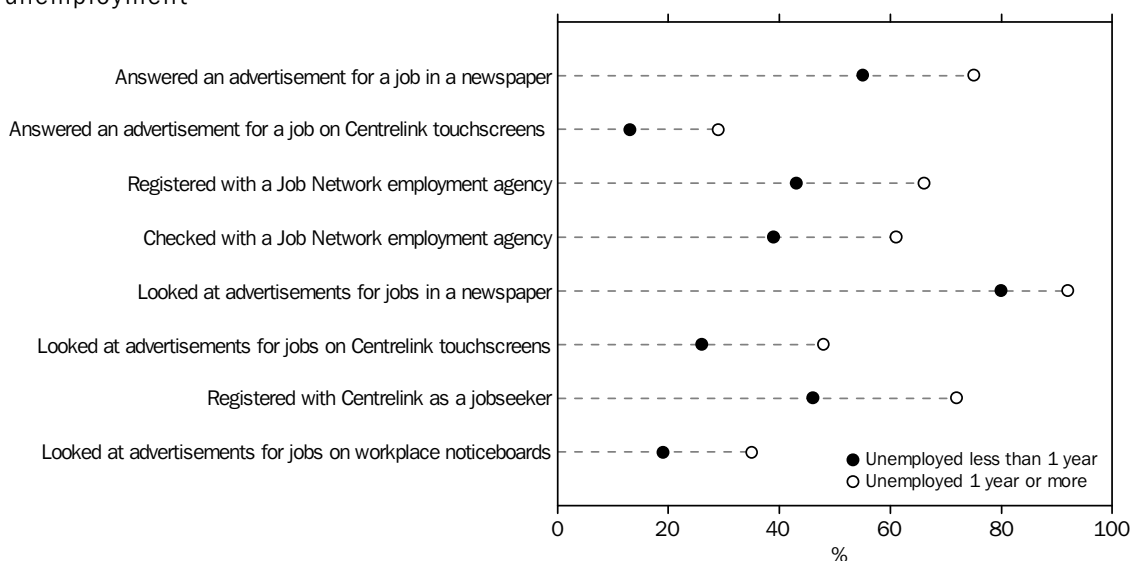
There were 46,800 unemployed people who reported that they had 'no difficulties at all' in finding work. Of those reporting no difficulties, 68% had been unemployed for less than eight weeks.

All steps taken to find work

The most common steps taken to find work reported by unemployed people in July 2009 were 'wrote, phoned or applied in person to an employer for work' (83%) and 'looked at advertisements for jobs in a newspaper' (82%). Other steps commonly taken to find work included 'looked at advertisements on the Internet' (75%) and 'answered an advertisement for a job on the Internet' (59%).

SUMMARY OF FINDINGS *continued*

UNEMPLOYED PERSONS, Selected steps taken to find work(a)—By duration of current period of unemployment



(a) Refers to all steps taken to find work, therefore people may appear in more than one category.

All steps taken to find work continued

The largest percentage point difference in the steps taken to find work for long-term unemployed people compared to those who had been unemployed for less than 1 year were:

- 'registered with Centrelink as a job seeker' (72% and 46% respectively)
- 'registered with a Job Network employment agency' (66% and 43% respectively)
- 'looked at advertisements for jobs on Centrelink touchscreens' (48% and 26% respectively).

The pattern of steps taken to find work also varied depending on whether job-seekers were looking for full-time or part-time work.

The largest percentage point differences between those looking for full-time work and those looking for part-time work were in the steps involving Centrelink or the Job Network employment agencies. For example:

- 'registered with Centrelink as a job seeker' (58% of those looking for full-time work and 23% of those looking for part-time work)
- 'registered with a Job Network employment agency' (55% and 21% respectively)
- 'checked with a Job Network employment agency' (50% and 19% respectively).

Older and younger unemployed

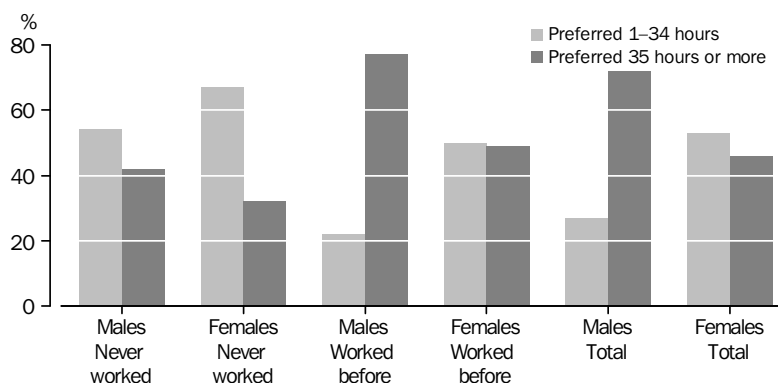
In July 2009, 25% (147,000) of unemployed people were aged 45 years and over compared to 36% (215,000) of unemployed people aged 15–24 years. The most common steps taken to find work reported by the older unemployed (aged 45 years and over) were 'looked at advertisements for a job in the newspaper' (85%) and 'wrote, phoned or applied in person to an employer for work' (84%). In contrast, the most common steps taken to find work reported by the younger unemployed (aged 15–24 years) were 'wrote, phoned or applied in person to an employer for work' (81%) and 'looked at advertisements for a job on the Internet' (80%).

SUMMARY OF FINDINGS *continued*

Preferred number of hours

Generally, unemployed men preferred to work more hours than unemployed women. In July 2009, 72% of unemployed men reported that they preferred to work 35 hours or more, compared to 46% of unemployed women.

UNEMPLOYED PERSONS, Preferred number of hours(a)—By whether had worked before



(a) Includes people who did not know how many hours they preferred to work.

Women who had never worked before preferred to work less than 35 hours (67% compared to 54% of men), whereas 77% of men who had worked before preferred to work 35 hours or more (compared to 49% of women who had worked previously).

ALL JOB STARTERS

Characteristics of current job

There were 1.3 million job starters (employed people who started their current job in the previous 12 months) at July 2009, and around 92% of these were employees and 7% were own account workers. More than one-third of job starters (38% or 507,400) usually worked part-time hours and 40% of these preferred to work more hours.

Nearly one-third (32%) of job starters who were classified as Sales workers, were aged 15–19, while a large proportion of Professionals (38%) were aged 25–34 years.

Approximately 60% of job starters were aged 15–34 years. Of these, almost half (47%) were aged 25–34 years, a further 28% were aged 20–24 years and the remaining 24% were aged 15–19 years. This partly reflects the transition of younger people from education into work and may also reflect the greater job mobility of younger people. In contrast, 21% were aged 45 years or older (14% were aged 45–54 years and 7% were aged 55 years and over).

Duration of looking for work

Most new job starters had either not been looking for work at all prior to commencing their new job (36%) or had been looking for less than 8 weeks (34%). More than a quarter (26%) had been looking for work for greater than 8 weeks but less than one year before commencing their current job. However, 4% of all job starters had been looking for work for one year or more.

EMPLOYEE (EXCLUDING OMIES) JOB STARTERS

In July 2009 there were an estimated 1.2 million job starters who were employees (excluding OMIEs). For 9% of these, it was the first job they ever had. Close to two-thirds of first job holders (62%) were aged 15–19 years.

SUMMARY OF FINDINGS *continued*

EMPLOYEE (EXCLUDING OMIES) JOB STARTERS *continued*

Of the 1.1 million employees (excluding OMIEs) who started their current job in the previous 12 months and had worked before, 57% (622,200) had changed employer to start their current job. The remaining 43% (463,800) were out of work prior to starting their current job.

More than two-fifths (43%) of employees (excluding OMIEs) who started their current job in the previous 12 months did not have paid leave entitlements in their current job. Almost half (44%) of these were aged 15–24 years. Over two thirds (68%) of job starters aged 15–19 years did not have paid leave entitlements. In contrast, the reverse was true for job starters in other age groups. For example 36% of job starters aged 25–34 years did not have paid leave entitlements, and 34% of those aged 45–54 years did not have paid leave entitlements.

Over two-thirds (812,100 or 68%) of employee (excluding OMIEs) job starters reported that they had prior knowledge that work was available before attaining the job. One-third (33%) of these were aged 15–24 years and 19% were aged 45 years and over.

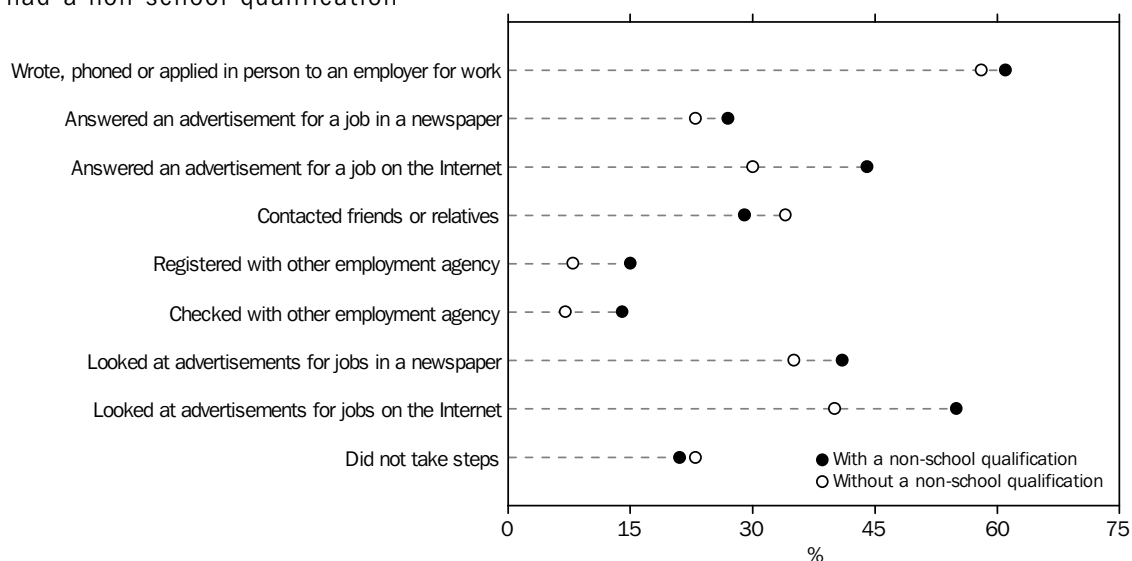
All steps taken to attain a job

The most commonly reported step to attain a job reported by employee (excluding OMIEs) job starters was 'wrote, phoned or applied in person to an employer for work' (60%). This proportion was larger (66%) for people who were out of work prior to starting their job.

A higher proportion of first job holders reported that they 'contacted friends or relatives' (37%) compared to people who had worked before (30%). However, a higher proportion of those who had worked before reported they:

- 'answered an advertisement for a job in the newspaper' (26% compared to 18% of first job holders)
- 'looked at advertisements for jobs in a newspaper' (40% compared to 27%)
- 'looked at advertisements for jobs on the Internet' (50% compared to 40%)
- 'answered an advertisement for a job on the Internet' (39% compared to 28%).

EMPLOYEE (EXCLUDING OMIES) JOB STARTERS, Selected steps taken to attain a job (a)—Whether had a non-school qualification



(a) Refers to all steps taken to obtain a job, therefore people may appear in more than one category.

SUMMARY OF FINDINGS *continued*

All steps taken to attain a job continued

Some 690,100 (58%) of employee (excluding OMIEs) job starters had a non-school qualification. Of the steps taken to attain a job, there were some differences between those with a non-school qualification and those without a non-school qualification. These differences include:

- 'answered an advertisement for a job on the Internet' (44% compared to 33% without a non-school qualification)
- 'looked at advertisements for jobs on the Internet' (55% compared to 40%)
- 'contacted friends or relatives' (29% compared to 34%)
- 'registered with other employment agency' (15% compared to 8%)
- 'checked with other employment agency' (15% compared to 7%).

LIST OF TABLES

page

UNEMPLOYED PERSONS, AND EMPLOYED PERSONS WHO STARTED THEIR CURRENT JOB IN THE PREVIOUS 12 MONTHS

- 1** Age group (years), relationship in household, level of highest non-school qualification, number of jobs started in the previous 12 months, all steps taken to find work/attain a job and preferred number of hours, by sex 12

UNEMPLOYED PERSONS

- 2** Main difficulty in finding work, whether looked for full-time or part-time work, duration of current period of unemployment and mean duration and median duration of unemployment, July 2001 to July 2009 14
- 3** Age group (years), relationship in household, country of birth, level of highest non-school qualification, all steps taken to find work, by whether looked for full-time or part-time work, by sex 15
- 4** Number of offers of employment in the current period of unemployment, whether had ever worked for two weeks or more, time spent looking for work in the previous 12 months, duration of current period of unemployment, mean duration and median duration of current period of unemployment, by whether looked for full-time or part-time work, by sex 16
- 5** All steps taken to find work, by age group (years), by sex 17
- 6** Main difficulty in finding work, sex, by duration of current period of unemployment, mean duration and median duration of current period of unemployment 18
- 7** Main difficulty in finding work, by age group (years) and sex 19
- 8** Duration of current period of unemployment, by level of highest non-school qualification, by sex 20

EMPLOYED PERSONS WHO STARTED THEIR CURRENT JOB IN THE PREVIOUS 12 MONTHS

- 9** Sex, level of highest non-school qualification, status in employment in current job, duration of looking for work before current job, occupation of current job, full-time or part-time status of current employment, whether preferred to work more hours than usually worked, by age group (years) and employment type in current job 21
- 10** Duration of looking for work before current job, by level of highest non-school qualification, by sex 22

LIST OF TABLES *continued*

page

EMPLOYEES (EXCLUDING OMIES) WHO STARTED THEIR CURRENT JOB IN THE PREVIOUS
12 MONTHS

11	Whether had prior knowledge that job was available, whether first job ever held lasting two weeks or more, whether had paid leave entitlements in current job, by age group (years), by sex	23
12	All steps taken to attain a job, by whether first job ever held lasting two weeks or more, by sex	24

POPULATIONS

13	State or territory of usual residence, by sex	26
-----------	---	----

UNEMPLOYED PERSONS AND EMPLOYED PERSONS WHO STARTED THEIR CURRENT JOB IN THE PREVIOUS 12 MONTHS, Selected characteristics—By sex

	UNEMPLOYED PERSONS				EMPLOYED PERSONS WHO STARTED THEIR CURRENT JOB IN THE PREVIOUS 12 MONTHS			
	Males	Females	Persons		Males	Females	Persons	
	'000	'000	'000	%	'000	'000	'000	%
Age group (years)								
15–19	67.8	53.3	121.1	20.2	88.5	100.3	188.8	14.1
20–24	56.1	37.8	93.9	15.7	112.7	109.2	221.9	16.5
25–34	75.1	49.8	124.9	20.8	199.0	169.2	368.2	27.4
35–44	59.6	53.1	112.7	18.8	135.3	147.8	283.1	21.1
45–54	49.7	41.0	90.7	15.1	90.1	100.3	190.3	14.2
55 and over	36.9	19.4	56.3	9.4	45.2	45.9	91.1	6.8
Relationship in household								
Family member	269.1	209.9	479.0	79.9	543.3	548.9	1 092.2	81.3
Husband, wife or partner	121.6	102.5	224.2	37.4	361.0	346.4	707.4	52.7
With dependants	73.7	59.1	132.7	22.1	195.7	165.9	361.7	26.9
Without dependants	48.0	43.5	91.4	15.2	165.3	180.4	345.7	25.7
Lone parent	*8.1	32.4	40.5	6.8	10.9	53.5	64.4	4.8
Dependent student	33.7	29.2	62.9	10.5	48.7	59.2	107.9	8.0
Non-dependent child	87.1	35.2	122.3	20.4	102.6	74.3	176.9	13.2
Other family person	18.6	10.5	29.1	4.9	20.1	15.5	35.6	2.7
Non-family member	70.7	40.4	111.1	18.5	117.1	110.9	228.0	17.0
Relationship not determined	*5.4	*4.1	9.5	1.6	10.3	12.8	23.1	1.7
Level of highest non-school qualification								
With a non-school qualification(a)	144.7	121.7	266.4	44.4	386.0	413.0	798.9	59.5
Bachelor Degree or above	41.6	43.0	84.6	14.1	153.6	187.6	341.2	25.4
Advanced Diploma/Diploma	21.9	15.9	37.8	6.3	42.5	73.2	115.7	8.6
Certificate III/IV	56.8	33.0	89.8	15.0	143.5	100.3	243.7	18.1
Certificate I/II(b)	21.1	26.9	47.9	8.0	36.9	44.8	81.8	6.1
Without a non-school qualification	200.6	132.6	333.2	55.6	284.8	259.7	544.4	40.5
Number of jobs started in the previous 12 months								
None	267.9	210.0	477.9	79.7
One	51.6	33.8	85.4	14.2	512.5	516.8	1 029.3	76.6
Two	11.9	8.8	20.7	3.5	108.7	111.0	219.7	16.4
Three or more	13.8	**1.9	15.7	2.6	49.5	44.8	94.3	7.0
All steps taken to find work/attain a job(c)(d)(e)								
Wrote, phoned or applied in person to an employer for work	283.6	214.1	497.8	83.0	349.9	368.2	718.1	60.0
Answered an advertisement for a job in a newspaper	203.8	143.4	347.3	57.9	153.4	153.6	307.0	25.6
Answered an advertisement for a job on the Internet	198.3	154.7	353.0	58.9	219.6	234.8	454.4	37.9
Answered an advertisement for a job on Centrelink touchscreens	59.8	31.5	91.2	15.2	19.1	*5.2	24.3	2.0
Answered an advertisement for a job on workplace noticeboards	41.0	25.1	66.2	11.0	17.6	21.0	38.6	3.2
Contacted friends or relatives	194.5	121.8	316.2	52.7	206.1	164.8	370.8	31.0
Advertised or tendered for work	15.1	16.5	31.6	5.3	16.3	19.1	35.3	3.0
Registered with a Job Network employment agency	176.5	103.2	279.7	46.6	94.4	78.1	172.5	14.4
Registered with other employment agency	78.6	49.9	128.6	21.4	73.2	69.8	143.0	11.9
Checked with a Job Network employment agency	158.8	96.0	254.8	42.5	82.0	59.8	141.7	11.8
Checked with other employment agency	84.4	59.5	143.9	24.0	71.6	61.8	133.4	11.1
Looked at advertisements for jobs in a newspaper	281.1	209.3	490.4	81.8	232.3	232.5	464.8	38.8
Looked at advertisements for jobs on the Internet	249.8	197.7	447.5	74.6	283.8	299.0	582.9	48.7
Looked at advertisements for jobs on Centrelink touchscreens	113.5	62.9	176.3	29.4	39.4	17.2	56.6	4.7
Looked at advertisements for jobs on workplace noticeboards	75.3	56.2	131.5	21.9	34.8	40.3	75.2	6.3
Registered with Centrelink as a job seeker	192.8	105.0	297.8	49.7	78.7	71.4	150.1	12.5
Other	47.4	30.6	78.0	13.0	54.2	59.7	113.8	9.5
Did not take steps to find work/attain a job(f)	*4.6	**1.0	*5.6	*0.9	131.7	129.5	261.2	21.8
Employees (excluding OMIEs)	586.3	611.2	1 197.6	100.0

* estimate has a relative standard error of 25% to 50% and should be used with caution

** estimate has a relative standard error greater than 50% and is considered too unreliable for general use

. . not applicable

(a) Includes 'level not determined'.

(b) Includes 'certificate not further defined'.

(c) Refers to all steps taken to find work/attain a job, therefore people may appear in more than one category.

(d) Refers to all steps taken to attain a job, not necessarily the current or main job.

(e) Owner managers and contributing family workers were not asked about steps taken to attain a job, therefore percentages for all steps taken to attain a job are calculated for Employees (excluding OMIEs) only.

(f) Includes people who were approached by their employer.

UNEMPLOYED PERSONS AND EMPLOYED PERSONS WHO STARTED THEIR CURRENT JOB IN THE PREVIOUS 12 MONTHS, Selected characteristics—By sex *continued*

	UNEMPLOYED PERSONS				EMPLOYED PERSONS WHO STARTED THEIR CURRENT JOB IN THE PREVIOUS 12 MONTHS			
	Males	Females	Persons		Males	Females	Persons	
	'000	'000	'000	%	'000	'000	'000	%
Preferred number of hours(a)								
1–15	31.7	43.4	75.2	12.5
16–29	43.9	68.7	112.6	18.8
30–34	17.6	22.8	40.5	6.8
35–39	113.7	74.4	188.2	31.4
40 hours or more	134.3	41.5	175.8	29.3
Did not know	*3.9	*3.5	*7.4	*1.2
Total	345.2	254.4	599.6	100.0	670.7	672.6	1 343.4	100.0

* estimate has a relative standard error of 25% to 50% and should be used with caution

.. not applicable

(a) Refers to the number of hours people would like to work a week.

UNEMPLOYED PERSONS, Selected characteristics—July 2001 to July 2009

	July 2001	July 2002	July 2003	July 2004	July 2005	July 2006	July 2007	July 2008	July 2009
PERSONS ('000)									
Total	613.0	554.8	564.5	528.2	484.8	462.0	414.2	422.6	599.6
SELECTED CHARACTERISTICS (%)									
Main difficulty in finding work									
Too many applicants for available jobs	11.5	14.7	11.9	11.3	9.5	8.9	8.6	8.0	14.9
Lacked necessary skills or education	10.4	10.6	11.3	9.4	9.5	8.9	10.1	9.4	8.2
Considered too young by employers(a)	na	na	na	1.0	1.8	*1.1	1.7	*1.6	*0.8
Considered too old by employers(a)	na	na	na	10.7	9.5	9.4	6.9	5.2	5.6
Insufficient work experience	11.6	11.2	12.2	13.1	10.4	10.2	10.1	9.0	8.9
No vacancies at all	10.7	6.6	8.7	6.3	5.2	5.8	5.1	4.4	9.6
No vacancies in line of work	10.4	9.5	9.3	8.0	6.4	6.7	6.9	6.2	10.8
Too far to travel/transport problems	6.8	7.1	6.4	7.9	9.3	9.1	6.5	8.4	5.9
Own ill health or disability	5.7	6.6	5.6	6.8	7.6	9.7	9.6	10.2	7.7
Language difficulties	2.4	2.5	2.9	1.4	2.5	2.0	2.6	*2.0	*1.4
Unsuitable hours	5.0	4.4	6.0	5.6	6.1	5.4	6.6	9.1	3.8
Difficulties with finding child care and other family responsibilities	2.0	1.5	1.6	3.1	3.1	2.2	3.3	4.7	2.6
No feedback from employers	—	1.9	1.6	2.0	1.7	2.9	3.3	2.7	4.9
Other difficulties(b)	3.4	3.2	3.2	4.1	7.7	7.5	7.0	6.4	7.0
No difficulties at all	8.6	6.8	6.0	9.3	9.9	10.3	11.8	12.8	7.8
Whether looked for full-time or part-time work									
Looked for full-time work	76.3	75.7	74.4	74.4	71.3	72.2	71.2	69.9	75.3
Looked for part-time work	23.7	24.3	25.6	25.6	28.7	27.8	28.8	30.1	24.7
Duration of current period of unemployment									
Under 1 year	76.5	73.7	78.2	78.6	82.0	79.5	81.2	84.9	84.1
1 and under 4 weeks	19.1	20.4	22.7	24.9	27.0	23.6	28.4	25.8	23.6
4 and under 8 weeks	13.1	10.9	13.6	9.8	11.0	12.2	13.1	15.0	10.8
8 and under 13 weeks	8.8	10.4	9.1	10.9	12.5	10.9	8.9	10.7	10.1
13 and under 26 weeks	19.9	17.5	17.9	18.1	16.9	17.7	17.1	18.8	23.0
26 and under 52 weeks	15.6	14.6	14.9	14.9	14.6	15.1	13.7	14.6	16.7
1 year and over	23.5	26.3	21.8	21.4	18.0	20.5	18.8	15.1	15.9
1 and under 2 years	8.9	11.7	8.7	7.7	6.4	8.5	9.6	7.3	8.8
2 years and over	14.6	14.5	13.2	13.7	11.6	12.1	9.2	7.8	7.1
Total	100.0	100.0	100.0	100.0	100.0	100.0	100.0	100.0	100.0
DURATION OF CURRENT PERIOD OF UNEMPLOYMENT (wks)									
Mean duration of current period of unemployment	49.8	50.9	48.8	52.2	39.7	45.0	39.0	35.7	32.7
Median duration of current period of unemployment	18	18	16	16	12	15	12	11	16
* estimate has a relative standard error of 25% to 50% and should be used with caution	(a) Prior to July 2004, these categories were collected as part of 'considered too young or too old by employers'. See paragraph 22 of the Explanatory Notes.								
— nil or rounded to zero (including null cells)	(b) Includes people who reported 'difficulties because of ethnic background'.								
na not available									

UNEMPLOYED PERSONS, Whether looked for full-time or part-time work—By selected characteristics—By sex

	LOOKED FOR FULL-TIME WORK			LOOKED FOR PART-TIME WORK			TOTAL		
	Males	Females	Persons	Males	Females	Persons	Males	Females	Persons
	'000	'000	'000	'000	'000	'000	'000	'000	'000
Age group (years)									
15–19	39.0	28.2	67.2	28.8	25.0	53.8	67.8	53.3	121.1
20–24	48.9	23.7	72.6	*7.2	14.1	21.3	56.1	37.8	93.9
25–34	67.8	37.7	105.5	*7.4	12.1	19.4	75.1	49.8	124.9
35–44	56.0	36.5	92.5	*3.6	16.6	20.2	59.6	53.1	112.7
45–54	45.9	26.8	72.7	*3.8	14.2	18.0	49.7	41.0	90.7
55 and over	30.6	10.4	41.0	*6.3	9.0	15.3	36.9	19.4	56.3
Relationship in household									
Family member	221.9	130.7	352.6	47.2	79.2	126.4	269.1	209.9	479.0
Husband, wife or partner	109.9	62.8	172.8	11.7	39.7	51.4	121.6	102.5	224.2
With dependants	69.2	31.7	100.8	*4.5	27.4	31.9	73.7	59.1	132.7
Without dependants	40.7	31.2	71.9	*7.2	12.3	19.5	48.0	43.5	91.4
Lone parent	*6.8	25.1	31.9	**1.2	*7.3	*8.5	*8.1	32.4	40.5
Dependent student	*7.3	*4.6	11.9	26.4	24.6	51.1	33.7	29.2	62.9
Non-dependent child	83.4	31.5	114.8	*3.7	*3.8	*7.5	87.1	35.2	122.3
Other related individual	14.5	*6.7	21.2	*4.2	*3.8	*8.0	18.6	10.5	29.1
Non-family member	61.6	29.1	90.7	9.1	11.3	20.4	70.7	40.4	111.1
Relationship not determined	*4.7	*3.5	*8.2	**0.8	**0.5	**1.3	*5.4	*4.1	9.5
Country of birth									
Born in Australia	197.6	108.9	306.6	37.3	59.3	96.6	235.0	168.2	403.2
Born overseas	90.5	54.5	144.9	19.8	31.7	51.5	110.3	86.1	196.4
Born in main English-speaking countries	28.6	15.5	44.1	*3.1	*6.1	9.3	31.7	21.7	53.4
Born in other than main English-speaking countries	61.9	38.9	100.8	16.7	25.5	42.2	78.6	64.5	143.0
Level of highest non-school qualification									
With a non-school qualification(a)	131.0	84.5	215.5	13.7	37.2	50.9	144.7	121.7	266.4
Bachelor Degree or above	35.7	29.6	65.2	*5.9	13.5	19.3	41.6	43.0	84.6
Advanced Diploma/Diploma	18.8	10.3	29.2	*3.0	*5.6	*8.6	21.9	15.9	37.8
Certificate III/IV	53.5	23.7	77.2	*3.2	9.3	12.6	56.8	33.0	89.8
Certificate I/II(b)	19.5	19.5	39.1	**1.5	*7.3	8.8	21.1	26.9	47.9
Without a non-school qualification	157.1	78.9	236.0	43.4	53.8	97.2	200.6	132.6	333.2
All steps taken to find work(c)(d)									
Wrote, phoned or applied in person to an employer for work	244.5	143.0	387.5	39.1	71.1	110.3	283.6	214.1	497.8
Answered an advertisement for a job in a newspaper	185.3	105.1	290.4	18.5	38.4	56.9	203.8	143.4	347.3
Answered an advertisement for a job on the Internet	172.4	115.9	288.4	25.9	38.7	64.6	198.3	154.7	353.0
Answered an advertisement for a job on Centrelink touchscreens	55.9	25.9	81.8	*3.9	*5.5	9.4	59.8	31.5	91.2
Answered an advertisement for a job on workplace noticeboards	39.0	20.9	59.9	**2.0	*4.3	*6.3	41.0	25.1	66.2
Contacted friends or relatives	168.4	79.9	248.2	26.1	41.9	68.0	194.5	121.8	316.2
Advertised or tendered for work	13.4	9.6	23.0	**1.7	*6.9	*8.6	15.1	16.5	31.6
Registered with a Job Network employment agency	163.5	85.7	249.2	13.0	17.5	30.5	176.5	103.2	279.7
Registered with other employment agency	76.0	39.6	115.6	*2.7	10.3	13.0	78.6	49.9	128.6
Checked with a Job Network employment agency	147.2	79.5	226.7	11.6	16.5	28.2	158.8	96.0	254.8
Checked with other employment agency	79.7	49.2	128.9	*4.7	10.3	15.0	84.4	59.5	143.9
Looked at advertisements for jobs in a newspaper	247.4	141.7	389.1	33.7	67.6	101.3	281.1	209.3	490.4
Looked at advertisements for jobs on the Internet	212.7	138.2	350.9	37.1	59.6	96.7	249.8	197.7	447.5
Looked at advertisements for jobs on Centrelink touchscreens	105.2	50.2	155.4	*8.3	12.6	20.9	113.5	62.9	176.3
Looked at advertisements for jobs on workplace noticeboards	69.0	43.7	112.7	*6.4	12.5	18.9	75.3	56.2	131.5
Registered with Centrelink as a job seeker	179.7	84.3	264.0	13.1	20.7	33.8	192.8	105.0	297.8
Other	38.3	19.6	57.8	9.2	11.0	20.2	47.4	30.6	78.0
Total	288.1	163.4	451.5	57.1	91.0	148.1	345.2	254.4	599.6

* estimate has a relative standard error of 25% to 50% and should be used with caution

** estimate has a relative standard error greater than 50% and is considered too unreliable for general use

(a) Includes 'level not determined'.

(b) Includes 'certificate not further defined'.

(c) Refers to all steps taken to find work, therefore people may appear in more than one category.

(d) Excludes people who 'did not take steps to find work'.

UNEMPLOYED PERSONS, Whether looked for full-time or part-time work—By recent labour market experience—By sex

	LOOKED FOR FULL-TIME WORK			LOOKED FOR PART-TIME WORK			TOTAL		
	Males	Females	Persons	Males	Females	Persons	Males	Females	Persons
PERSONS ('000)									
Number of offers of employment in the current period of unemployment									
None	244.6	137.1	381.8	49.7	80.5	130.1	294.3	217.6	511.9
One	31.0	17.0	48.0	*5.6	9.4	15.0	36.6	26.4	63.0
Two or more	12.5	9.2	21.7	**1.8	**1.2	*3.0	14.3	10.4	24.7
Whether had ever worked for two weeks or more									
Had previously worked	261.5	142.1	403.6	31.1	61.5	92.6	292.6	203.6	496.2
Last job less than 2 years ago	221.2	113.9	335.1	24.3	40.5	64.7	245.4	154.4	399.8
Last job 2 years or more ago	40.3	28.2	68.5	*6.8	21.1	27.9	47.2	49.3	96.4
Had never worked	26.6	21.3	47.9	26.0	29.5	55.5	52.6	50.7	103.4
Time spent looking for work in the previous 12 months									
1 and under 2 weeks	26.8	16.1	42.9	13.3	20.5	33.7	40.1	36.5	76.6
2 and under 4 weeks	23.9	11.0	34.8	*5.4	*8.0	13.4	29.2	19.0	48.2
4 and under 8 weeks	28.3	16.5	44.7	*7.0	10.1	17.2	35.3	26.6	61.9
8 and under 13 weeks	30.9	17.3	48.2	*5.2	9.6	14.8	36.1	26.8	63.0
13 and under 26 weeks	64.6	45.2	109.8	12.9	13.5	26.4	77.5	58.7	136.2
26 and under 39 weeks	45.1	21.6	66.7	*6.2	10.0	16.2	51.3	31.6	82.9
39 and under 52 weeks	20.6	8.9	29.5	**1.4	*4.7	*6.1	22.0	13.6	35.6
52 weeks	47.9	27.0	74.9	*5.7	14.6	20.3	53.6	41.6	95.2
Duration of current period of unemployment									
Under 1 year	240.2	136.4	376.6	51.4	76.4	127.8	291.6	212.8	504.4
1 and under 4 weeks	62.5	28.5	91.0	19.5	30.8	50.3	82.0	59.3	141.3
4 and under 8 weeks	30.0	17.6	47.7	*6.8	10.0	16.8	36.8	27.7	64.5
8 and under 13 weeks	27.7	19.8	47.5	*4.2	8.9	13.1	31.9	28.7	60.6
13 and under 26 weeks	63.8	45.3	109.1	14.9	14.1	29.0	78.7	59.4	138.1
26 and under 39 weeks	40.5	20.3	60.8	*5.0	9.1	14.1	45.4	29.4	74.9
39 and under 52 weeks	15.7	*4.9	20.6	**1.1	*3.4	*4.5	16.7	*8.3	25.1
1 year and over	47.9	27.0	74.9	*5.7	14.6	20.3	53.6	41.6	95.2
1 and under 2 years	26.9	14.8	41.7	**2.3	8.8	11.1	29.3	23.6	52.8
2 years and over	21.0	12.2	33.2	*3.4	*5.8	9.2	24.4	18.0	42.4
Total	288.1	163.4	451.5	57.1	91.0	148.1	345.2	254.4	599.6
DURATION OF CURRENT PERIOD OF UNEMPLOYMENT (wks)									
Mean duration of current period of unemployment	33.5	34.9	34.0	25.8	30.7	28.8	32.2	33.4	32.7
Median duration of current period of unemployment	17	17	17	9	10	9	17	14	16
* estimate has a relative standard error of 25% to 50% and should be used with caution ** estimate has a relative standard error greater than 50% and is considered too unreliable for general use									

UNEMPLOYED PERSONS, All steps taken to find work(a)—By age group (years)—By sex

AGE GROUP (YEARS)

	15-19	20-24	25-34	35-44	45-54	55 and over	Total	
	'000	'000	'000	'000	'000	'000	'000	%

All steps taken to find work(a)

MALES

Wrote, phoned or applied in person to an employer for work	51.7	45.6	64.3	48.9	42.5	30.6	283.6	82.2
Answered an advertisement for a job in a newspaper	29.0	36.5	46.9	37.3	32.3	21.9	203.8	59.0
Answered an advertisement for a job on the Internet	35.4	37.6	44.6	35.5	29.0	16.2	198.3	57.4
Answered an advertisement for a job on Centrelink touchscreens	*6.8	11.6	16.8	9.5	*8.1	*7.0	59.8	17.3
Contacted friends or relatives	36.8	32.2	45.1	36.9	25.9	17.7	194.5	56.3
Registered with a Job Network employment agency	23.5	28.5	42.3	36.9	26.6	18.6	176.5	51.1
Registered with other employment agency	*7.2	10.1	17.1	19.0	14.3	10.9	78.6	22.8
Checked with a Job Network employment agency	23.8	24.9	35.4	32.7	22.8	19.3	158.8	46.0
Checked with other employment agency	9.6	12.4	17.5	20.2	12.3	12.5	84.4	24.5
Looked at advertisements for jobs in a newspaper	48.3	46.2	62.8	51.5	43.6	28.7	281.1	81.4
Looked at advertisements for jobs on the Internet	49.8	46.0	55.2	42.0	33.5	23.3	249.8	72.4
Looked at advertisements for jobs on Centrelink touchscreens	16.3	15.9	29.3	22.0	15.2	14.7	113.5	32.9
Looked at advertisements for jobs on workplace noticeboards	10.9	13.5	18.2	15.1	*8.5	9.2	75.3	21.8
Registered with Centrelink as a job seeker	26.0	29.0	42.8	42.1	29.9	23.0	192.8	55.8
Other(b)	17.2	12.4	22.7	14.2	13.5	11.5	91.5	26.5
Total(c)	67.8	56.1	75.1	59.6	49.7	36.9	345.2	100.0

FEMALES

Wrote, phoned or applied in person to an employer for work	45.8	31.3	40.8	46.0	35.9	14.3	214.1	84.2
Answered an advertisement for a job in a newspaper	24.3	21.9	30.4	29.4	28.8	8.7	143.4	56.4
Answered an advertisement for a job on the Internet	31.5	28.2	33.3	29.9	24.2	*7.5	154.7	60.8
Answered an advertisement for a job on Centrelink touchscreens	*5.3	*6.4	*5.5	*4.2	*7.8	**2.2	31.5	12.4
Contacted friends or relatives	25.8	16.5	20.8	26.1	21.5	11.0	121.8	47.9
Registered with a Job Network employment agency	16.8	10.3	23.3	25.5	20.9	*6.4	103.2	40.6
Registered with other employment agency	*5.2	*3.1	11.4	14.9	11.8	*3.4	49.9	19.6
Checked with a Job Network employment agency	14.1	11.2	21.9	25.4	17.7	*5.7	96.0	37.7
Checked with other employment agency	*6.8	*6.9	14.2	14.9	12.0	*4.7	59.5	23.4
Looked at advertisements for jobs in a newspaper	41.9	30.6	40.8	43.1	37.4	15.5	209.3	82.3
Looked at advertisements for jobs on the Internet	44.5	32.4	40.8	40.0	27.9	12.2	197.7	77.7
Looked at advertisements for jobs on Centrelink touchscreens	10.5	9.0	13.1	14.7	11.1	*4.6	62.9	24.7
Looked at advertisements for jobs on workplace noticeboards	11.3	*8.3	12.4	11.5	8.7	*4.0	56.2	22.1
Registered with Centrelink as a job seeker	19.2	13.2	19.9	27.5	17.2	*7.9	105.0	41.3
Other(b)	13.7	*8.2	14.6	13.1	12.1	*4.4	66.0	26.0
Total(c)	53.3	37.8	49.8	53.1	41.0	19.4	254.4	100.0

PERSONS

Wrote, phoned or applied in person to an employer for work	97.5	76.9	105.1	94.9	78.4	45.0	497.8	83.0
Answered an advertisement for a job in a newspaper	53.3	58.5	77.2	66.6	61.0	30.6	347.3	57.9
Answered an advertisement for a job on the Internet	66.9	65.9	77.9	65.4	53.2	23.7	353.0	58.9
Answered an advertisement for a job on Centrelink touchscreens	12.1	18.0	22.3	13.7	15.9	9.2	91.2	15.2
Contacted friends or relatives	62.6	48.7	65.8	63.0	47.4	28.7	316.2	52.7
Registered with a Job Network employment agency	40.3	38.9	65.6	62.4	47.5	25.0	279.7	46.6
Registered with other employment agency	12.4	13.3	28.4	33.9	26.1	14.3	128.6	21.4
Checked with a Job Network employment agency	37.9	36.0	57.3	58.1	40.5	25.1	254.8	42.5
Checked with other employment agency	16.4	19.3	31.7	35.1	24.3	17.2	143.9	24.0
Looked at advertisements for jobs in a newspaper	90.2	76.8	103.6	94.6	81.0	44.3	490.4	81.8
Looked at advertisements for jobs on the Internet	94.3	78.4	95.9	82.0	61.4	35.5	447.5	74.6
Looked at advertisements for jobs on Centrelink touchscreens	26.8	24.9	42.4	36.7	26.3	19.3	176.3	29.4
Looked at advertisements for jobs on workplace noticeboards	22.2	21.8	30.7	26.6	17.2	13.2	131.5	21.9
Registered with Centrelink as a job seeker	45.2	42.2	62.7	69.7	47.1	30.9	297.8	49.7
Other(b)	30.9	20.6	37.2	27.4	25.6	15.8	157.5	26.3
Total(c)	121.1	93.9	124.9	112.7	90.7	56.3	599.6	100.0

* estimate has a relative standard error of 25% to 50% and should be used with caution

** estimate has a relative standard error greater than 50% and is considered too unreliable for general use

(a) Refers to all steps taken to find work, therefore people may appear in more than one category.

(b) Includes people who 'answered an advertisement for a job on workplace noticeboards' or 'advertised or tendered for work'.

(c) Includes people who 'did not take steps to find work'.

UNEMPLOYED PERSONS, Main difficulty in finding work—By duration of current period of unemployment

DURATION OF CURRENT PERIOD OF UNEMPLOYMENT

	1 and under 8 weeks	8 and under 26 weeks	26 and under 52 weeks	1 year and over	Total	Mean duration	Median duration
	'000	'000	'000	'000	'000	wks	wks
PERSONS							
Main difficulty in finding work							
Too many applicants for available jobs	25.8	36.2	15.4	11.8	89.2	25.9	16
Lacked necessary skills or education	10.9	16.9	10.7	10.5	49.0	42.0	24
Considered too old by employers	*6.1	8.8	10.0	9.0	33.9	59.6	*26
Insufficient work experience	14.1	17.4	10.4	11.7	53.5	29.2	23
No vacancies at all	25.2	14.2	10.8	*7.6	57.8	23.6	10
No vacancies in line of work	32.9	22.5	*5.4	*4.2	65.0	18.1	7
Too far to travel/transport problems	*8.1	15.7	*5.6	*6.0	35.4	52.5	21
Own ill health or disability	10.0	12.3	*8.3	15.6	46.2	56.3	27
Unsuitable hours	8.1	10.5	**2.2	**1.7	22.6	16.6	*10
Other family responsibilities	**2.3	*5.7	**0.6	*4.0	12.6	*81.5	*17
No feedback from employers	12.4	11.1	*3.1	*2.5	29.1	28.9	*13
Other difficulties(a)	18.2	17.5	13.5	9.3	58.5	34.7	20
No difficulties at all	31.8	9.9	*3.8	**1.2	46.8	8.6	3
Sex							
Males	118.8	110.6	62.2	53.6	345.2	32.2	17
Females	86.9	88.1	37.8	41.6	254.4	33.4	14
Total	205.8	198.7	99.9	95.2	599.6	32.7	16

PERSONS %

Main difficulty in finding work							
Too many applicants for available jobs	12.5	18.2	15.4	12.4	14.9
Lacked necessary skills or education	5.3	8.5	10.7	11.0	8.2
Considered too old by employers	*2.9	4.4	10.0	9.4	5.6
Insufficient work experience	6.8	8.7	10.4	12.2	8.9
No vacancies at all	12.2	7.1	10.8	*8.0	9.6
No vacancies in line of work	16.0	11.3	*5.4	*4.4	10.8
Too far to travel/transport problems	*3.9	7.9	*5.6	*6.3	5.9
Own ill health or disability	4.9	6.2	*8.3	16.4	7.7
Unsuitable hours	*4.0	5.3	**2.3	**1.8	3.8
Other family responsibilities	**1.1	*2.9	**0.6	*4.3	2.1
No feedback from employers	6.0	5.6	*3.1	*2.6	4.9
Other difficulties(a)	8.8	8.8	13.5	9.8	9.8
No difficulties at all	15.5	5.0	*3.8	*1.3	7.8
Sex							
Males	57.7	55.7	62.2	56.3	57.6
Females	42.3	44.3	37.8	43.7	42.4
Total	100.0	100.0	100.0	100.0	100.0

* estimate has a relative standard error of 25% to 50% and should be used with caution

** estimate has a relative standard error greater than 50% and is considered too unreliable for general use

.. not applicable

(a) Includes people who reported 'considered too young by employers', 'language difficulties', 'difficulties with finding child care' or 'difficulties because of ethnic background'.

UNEMPLOYED PERSONS, Main difficulty in finding work—By age group (years)—By sex

	AGE GROUP (YEARS)					SEX		
	15-19	20-24	25-34	35-44	45 and over	Males	Females	Total
PERSONS ('000)								
Too many applicants for available jobs	17.8	17.4	20.7	16.5	16.9	47.3	41.9	89.2
Lacked necessary skills or education	12.9	*7.6	9.9	*8.2	10.4	26.5	22.5	49.0
Considered too old by employers	—	**1.3	**1.1	*2.6	28.8	21.7	12.2	33.9
Insufficient work experience	18.6	12.3	14.0	*5.1	*3.4	27.4	26.1	53.5
No vacancies at all	20.9	*6.0	9.9	10.8	10.2	35.5	22.3	57.8
No vacancies in line of work	*6.1	*8.2	15.2	18.3	17.2	46.0	19.0	65.0
Too far to travel/transport problems	12.4	*6.8	*5.9	*5.2	*5.1	22.4	13.0	35.4
Own ill health or disability	**1.4	*5.0	10.7	13.6	15.5	31.3	14.9	46.2
Unsuitable hours	*5.2	*2.8	*5.3	*6.3	*3.0	*7.7	14.9	22.6
Other family responsibilities	—	**0.5	*5.5	*3.6	*3.0	*2.4	10.2	12.6
No feedback from employers	*6.6	*4.5	*5.7	*4.3	*8.0	16.6	12.5	29.1
Other difficulties(a)	*8.5	12.5	15.2	10.0	12.4	33.7	24.8	58.5
No difficulties at all	10.6	8.9	*5.7	*8.4	13.1	26.8	20.0	46.8
Total	121.1	93.9	124.9	112.7	147.0	345.2	254.4	599.6
PERSON (%)								
Too many applicants for available jobs	14.7	18.5	16.6	14.6	11.5	13.7	16.5	14.9
Lacked necessary skills or education	10.6	*8.1	7.9	*7.2	7.1	7.7	8.8	8.2
Considered too old by employers	—	**1.3	**0.9	*2.3	19.6	6.3	4.8	5.6
Insufficient work experience	15.4	13.1	11.2	*4.5	*2.3	7.9	10.3	8.9
No vacancies at all	17.3	*6.4	7.9	9.6	6.9	10.3	8.8	9.6
No vacancies in line of work	*5.0	*8.7	12.2	16.2	11.7	13.3	7.5	10.8
Too far to travel/transport problems	10.3	*7.2	*4.7	*4.6	*3.5	6.5	5.1	5.9
Own ill health or disability	**1.2	*5.4	8.6	12.0	10.6	9.1	5.9	7.7
Unsuitable hours	*4.3	*3.0	*4.2	*5.6	*2.0	*2.2	5.9	3.8
Other family responsibilities	—	**0.6	*4.4	*3.2	*2.0	*0.7	4.0	2.1
No feedback from employers	*5.5	*4.8	*4.6	*3.8	*5.4	4.8	4.9	4.9
Other difficulties(a)	*7.0	13.3	12.1	8.9	8.4	9.7	9.8	9.8
No difficulties at all	8.8	9.5	*4.6	*7.4	8.9	7.8	7.9	7.8
Total	100.0	100.0	100.0	100.0	100.0	100.0	100.0	100.0
* estimate has a relative standard error of 25% to 50% and should be used with caution			—	nil or rounded to zero (including null cells)				
** estimate has a relative standard error greater than 50% and is considered too unreliable for general use			(a)	Includes people who reported 'considered too young by employers', 'language difficulties', 'difficulties with finding child care' or 'difficulties because of ethnic background'.				

UNEMPLOYED PERSONS, Duration of current period of unemployment—By level of highest non-school qualification—By sex

WITH A NON-SCHOOL QUALIFICATION

<i>Duration of current period of unemployment</i>	<i>Bachelor Degree or above</i>	<i>Advanced Diploma/Diploma</i>	<i>Certificate III/IV</i>	<i>Certificate I/II (a)</i>	<i>Total (b)</i>	<i>Without a non-school qualification</i>	<i>Total</i>
MALES ('000)							
Under 1 year	39.6	19.6	47.5	16.7	126.8	164.8	291.6
1 and under 8 weeks	15.7	10.8	17.4	8.8	54.5	64.3	118.8
8 and under 26 weeks	16.8	*6.1	19.8	*5.7	48.7	61.9	110.6
26 and under 52 weeks	*7.1	*2.7	10.3	**2.2	23.5	38.7	62.2
1 year and over	**1.9	**2.3	9.3	*4.3	17.9	35.7	53.6
<i>Total</i>	41.6	21.9	56.8	21.1	144.7	200.6	345.2
FEMALES ('000)							
Under 1 year	38.7	14.1	26.0	21.3	102.6	110.2	212.8
1 and under 8 weeks	15.7	*6.9	11.4	*7.9	43.5	43.5	86.9
8 and under 26 weeks	18.7	*4.6	10.9	11.7	46.8	41.3	88.1
26 and under 52 weeks	*4.3	*2.7	*3.6	**1.8	12.3	25.4	37.8
1 year and over	*4.4	**1.8	*7.0	*5.5	19.1	22.5	41.6
<i>Total</i>	43.0	15.9	33.0	26.9	121.7	132.6	254.4
PERSONS ('000)							
Under 1 year	78.3	33.7	73.5	38.1	229.4	275.0	504.4
1 and under 8 weeks	31.5	17.7	28.9	16.7	98.0	107.8	205.8
8 and under 26 weeks	35.4	10.6	30.7	17.4	95.5	103.1	198.7
26 and under 52 weeks	11.4	*5.4	13.9	*4.0	35.8	64.1	99.9
1 year and over	*6.3	*4.0	16.3	9.9	37.0	58.2	95.2
<i>Total</i>	84.6	37.8	89.8	47.9	266.4	333.2	599.6
PERSONS (%)							
Under 1 year	92.6	89.3	81.9	79.4	86.1	82.5	84.1
1 and under 8 weeks	37.2	46.8	32.1	34.9	36.8	32.3	34.3
8 and under 26 weeks	41.9	28.1	34.3	36.2	35.9	30.9	33.1
26 and under 52 weeks	13.5	*14.3	15.5	*8.3	13.5	19.2	16.7
1 year and over	*7.4	*10.7	18.1	20.6	13.9	17.5	15.9
<i>Total</i>	100.0	100.0	100.0	100.0	100.0	100.0	100.0

* estimate has a relative standard error of 25% to 50% and should be used with caution

** estimate has a relative standard error greater than 50% and is considered too unreliable for general use

(a) Includes 'certificate not further defined'.

(b) Includes 'level not determined'.

EMPLOYED PERSONS WHO STARTED THEIR CURRENT JOB IN THE PREVIOUS 12 MONTHS, Selected characteristics—By age group (years) and employment type in current job

	AGE GROUP (YEARS)						EMPLOYMENT TYPE IN CURRENT JOB				
	15-19	20-24	25-34	35-44	45-54	55 and over	Employees (excluding OMIEs)	Owner managers and contributing family workers	Total		
	'000	'000	'000	'000	'000	'000	'000	'000	'000	%	
PERSONS											
Sex											
Males	88.5	112.7	199.0	135.3	90.1	45.2	586.3	84.4	670.7	49.9	
Females	100.3	109.2	169.2	147.8	100.3	45.9	611.2	61.4	672.6	50.1	
Level of highest non-school qualification											
With a non-school qualification(a)	33.1	122.0	273.0	190.8	121.6	58.5	690.1	108.9	798.9	59.5	
Postgraduate Degree	—	*4.3	23.0	14.1	12.7	*6.2	52.7	*7.6	60.3	4.5	
Graduate Diploma/Graduate Certificate	—	**1.2	12.4	11.9	*7.4	*2.7	29.8	*5.9	35.7	2.7	
Bachelor Degree	**0.6	40.6	114.1	53.3	24.0	12.6	213.8	31.4	245.3	18.3	
Advanced Diploma/Diploma	**0.4	21.7	32.1	30.2	20.6	10.8	99.0	16.8	115.7	8.6	
Certificate III/IV	15.5	37.6	70.8	61.1	41.8	16.9	208.7	35.0	243.7	18.1	
Certificate I/II(b)	15.7	14.1	17.7	16.5	11.2	*6.5	71.2	10.5	81.8	6.1	
Without a non-school qualification	155.7	99.9	95.2	92.3	68.7	32.6	507.5	36.9	544.4	40.5	
Status in employment in current job(c)											
Employees	185.8	214.0	341.8	248.4	169.3	78.1	1 197.6	39.8	1 237.4	92.1	
Employers	—	**0.3	**2.3	*4.9	*3.0	**0.5	—	11.0	11.0	0.8	
Own account workers	**2.1	*7.4	24.1	29.2	17.5	12.4	—	92.8	92.8	6.9	
Duration of looking for work before current job											
Less than 1 year	122.1	148.5	234.4	159.9	103.1	42.4	772.0	38.5	810.5	60.3	
1 and under 4 weeks	43.6	50.7	89.1	52.6	31.1	18.6	274.2	11.5	285.7	21.3	
4 and under 8 weeks	26.0	33.7	56.3	35.6	15.1	*5.7	168.0	*4.3	172.3	12.8	
8 and under 13 weeks	21.1	30.7	36.4	26.2	18.7	*3.2	131.3	*5.0	136.3	10.1	
13 and under 26 weeks	22.4	19.8	33.7	21.2	22.9	10.2	121.2	8.9	130.2	9.7	
26 and under 52 weeks	9.0	13.6	18.9	24.5	15.3	*4.8	77.3	8.8	86.1	6.4	
1 year and over	*4.7	*7.1	9.0	10.6	11.2	*4.3	40.9	*6.1	47.0	3.5	
Did not look for work	62.0	66.2	124.8	112.5	76.0	44.3	384.6	101.2	485.8	36.2	
Occupation of current job											
Managers	**1.7	9.5	33.3	36.8	20.6	9.7	82.4	29.2	111.6	8.3	
Professionals	*4.7	41.2	93.4	57.0	32.8	15.9	212.5	32.5	245.0	18.2	
Technicians and trades workers	27.5	31.9	48.6	34.5	17.1	*7.9	144.9	22.7	167.6	12.5	
Community and personal service workers	31.9	32.2	43.4	29.3	21.8	*7.9	153.2	13.2	166.4	12.4	
Clerical and administrative workers	19.3	29.8	52.7	42.2	36.1	19.3	185.7	13.7	199.4	14.8	
Sales workers	57.2	27.8	31.8	28.4	19.2	14.1	167.1	11.4	178.5	13.3	
Machinery operators and drivers	9.3	10.8	24.0	20.7	14.3	*4.3	77.3	*6.1	83.4	6.2	
Labourers	37.3	38.6	41.0	34.1	28.3	12.1	174.5	16.9	191.4	14.2	
Full-time or part-time status of current employment											
Full-time workers	69.4	142.2	295.9	184.3	126.4	50.1	770.2	98.1	868.3	64.6	
Part-time workers	119.3	79.7	72.3	98.7	63.9	41.0	427.3	47.7	475.0	35.4	
Whether preferred to work more hours than usually worked											
Usually works part-time hours	125.4	84.4	78.5	106.2	68.3	44.7	457.2	50.2	507.4	37.8	
Preferred to work more hours	48.2	30.7	36.1	43.2	30.8	12.4	178.6	22.9	201.4	15.0	
Did not prefer to work more hours(d)	77.2	53.7	42.4	63.0	37.5	32.3	278.6	27.4	306.0	22.8	
Usually worked full-time hours	63.4	137.5	289.7	176.9	122.1	46.4	740.4	95.6	835.9	62.2	
Total(e)	188.8	221.9	368.2	283.1	190.3	91.1	1 197.6	145.8	1 343.4	100.0	

* estimate has a relative standard error of 25% to 50% and should be used with caution

** estimate has a relative standard error greater than 50% and is considered too unreliable for general use

— nil or rounded to zero (including null cells)

(a) Includes 'level not determined'.

(b) Includes 'certificate not further defined'.

(c) Excludes 'contributing family workers'.

(d) Includes people who 'did not know' if they preferred to work more hours.

(e) Includes 'contributing family workers'.

EMPLOYED PERSONS WHO STARTED THEIR CURRENT JOB IN THE PREVIOUS 12 MONTHS, Duration of looking for work—By level of highest non-school qualification—By sex

WITH A NON-SCHOOL QUALIFICATION

<i>Duration of looking for work before current job</i>	<i>Bachelor Degree or above</i>	<i>Advanced Diploma/Diploma</i>	<i>Certificate III/IV</i>	<i>Certificate I/II(a)</i>	<i>Total(b)</i>	<i>Without a non-school qualification</i>	<i>Total</i>
	'000	'000	'000	'000	'000	'000	'000
MALES							
Less than 1 year	96.6	25.7	82.9	24.5	234.3	174.5	408.8
1 and under 4 weeks	24.4	9.1	26.5	10.9	72.1	66.5	138.6
4 and under 8 weeks	18.1	*5.3	18.0	*2.6	46.1	35.7	81.7
8 and under 13 weeks	18.1	*4.2	10.8	*4.8	38.6	28.5	67.1
13 and under 26 weeks	21.6	*3.2	19.9	*2.9	48.3	23.6	71.8
26 and under 52 weeks	14.4	*3.8	*7.8	*3.4	29.3	20.3	49.6
1 year and over	*5.6	**1.0	*4.3	*3.1	14.7	14.4	29.1
Did not look for work	51.4	15.8	56.2	9.3	137.0	95.9	232.8
Total	153.6	42.5	143.5	36.9	386.0	284.8	670.7

FEMALES

Less than 1 year	110.2	42.5	59.7	30.2	246.6	155.1	401.7
1 and under 4 weeks	36.3	15.8	27.5	*7.2	89.6	57.5	147.1
4 and under 8 weeks	23.9	9.7	13.1	*7.6	54.2	36.3	90.6
8 and under 13 weeks	21.5	*7.3	*6.8	*6.0	41.6	27.6	69.2
13 and under 26 weeks	18.5	*6.1	*7.3	*4.0	36.6	21.7	58.4
26 and under 52 weeks	10.0	*3.6	*5.1	*5.4	24.6	11.9	36.5
1 year and over	**2.2	**1.1	**2.2	*0.6	*6.6	11.3	17.9
Did not look for work	75.3	29.6	38.4	14.0	159.7	93.3	253.0
Total	187.6	73.2	100.3	44.8	413.0	259.7	672.6

PERSONS

Less than 1 year	206.8	68.1	142.6	54.8	481.0	329.5	810.5
1 and under 4 weeks	60.8	24.9	53.9	18.1	161.7	124.0	285.7
4 and under 8 weeks	42.0	15.0	31.1	10.2	100.3	72.0	172.3
8 and under 13 weeks	39.6	11.5	17.6	10.7	80.2	56.1	136.3
13 and under 26 weeks	40.0	9.4	27.2	*6.9	84.9	45.3	130.2
26 and under 52 weeks	24.4	*7.3	12.9	8.8	53.9	32.2	86.1
1 year and over	*7.8	**2.1	*6.5	*3.7	21.3	25.7	47.0
Did not look for work	126.6	45.5	94.6	23.3	296.7	189.1	485.8
Total	341.2	115.7	243.7	81.8	798.9	544.4	1 343.4

* estimate has a relative standard error of 25% to 50% and should be used with caution

(a) Includes 'certificate not further defined'.

(b) Includes 'level not determined'.

** estimate has a relative standard error greater than 50% and is considered too unreliable for general use

EMPLOYEES (EXCLUDING OMIES) WHO STARTED THEIR CURRENT JOB IN THE PREVIOUS 12 MONTHS, Selected job characteristics—By age group (years)—By sex

	AGE GROUP (YEARS)						
	15-19	20-24	25-34	35-44	45-54	55 and over	Total
	'000	'000	'000	'000	'000	'000	'000
MALES							
Whether had prior knowledge that job was available							
Had prior knowledge that current job was available	59.5	73.9	121.8	72.5	49.5	16.3	393.5
Did not have prior knowledge that job was available	27.4	33.6	53.6	41.1	22.3	14.9	192.9
Whether first job ever held lasting two weeks or more							
First job ever held	37.8	10.4	9.7	*3.4	**1.0	—	62.3
Had worked before	49.1	97.1	165.7	110.2	70.8	31.2	524.1
Out of work prior to starting job	26.7	40.5	70.9	42.1	29.2	16.1	225.6
Changed employer to start job	22.4	56.5	94.8	68.1	41.5	15.1	298.4
Whether had paid leave entitlements in current job							
With paid leave entitlements	33.2	53.7	114.3	81.2	52.4	17.1	351.8
Without paid leave entitlements	53.7	53.7	61.2	32.3	19.4	14.1	234.5
Total	86.9	107.4	175.4	113.5	71.8	31.2	586.3
FEMALES							
Whether had prior knowledge that job was available							
Had prior knowledge that current job was available	57.8	75.0	110.8	89.9	59.7	25.4	418.6
Did not have prior knowledge that job was available	41.0	30.3	42.2	34.9	28.6	15.6	192.6
Whether first job ever held lasting two weeks or more							
First job ever held	31.6	*7.5	*6.0	**1.8	*2.4	—	49.3
Had worked before	67.2	97.8	147.0	123.0	85.9	41.0	561.9
Out of work prior to starting job	28.5	37.0	65.7	51.3	37.3	18.4	238.1
Changed employer to start job	38.7	60.8	81.3	71.7	48.5	22.7	323.8
Whether had paid leave entitlements in current job							
With paid leave entitlements	25.9	58.1	95.6	77.0	54.0	22.9	333.6
Without paid leave entitlements	72.9	47.2	57.4	47.9	34.2	18.1	277.7
Total	98.8	105.3	153.0	124.8	88.3	41.0	611.2
PERSONS							
Whether had prior knowledge that job was available							
Had prior knowledge that current job was available	117.4	148.9	232.6	162.4	109.1	41.7	812.1
Did not have prior knowledge that job was available	68.4	63.9	95.8	76.0	50.9	30.6	385.5
Whether first job ever held lasting two weeks or more							
First job ever held	69.4	17.9	15.7	*5.2	*3.4	—	111.6
Had worked before	116.3	194.9	312.7	233.2	156.6	72.3	1 086.0
Out of work prior to starting job	55.2	77.5	136.6	93.4	66.6	34.4	463.8
Changed employer to start job	61.1	117.3	176.1	139.8	90.1	37.8	622.2
Whether had paid leave entitlements in current job							
With paid leave entitlements	59.1	111.8	209.9	158.1	106.4	40.0	685.4
Without paid leave entitlements	126.7	100.9	118.5	80.2	53.7	32.3	512.2
Total	185.8	212.7	328.4	238.4	160.1	72.3	1 197.6

* estimate has a relative standard error of 25% to 50% and should be used with caution

** estimate has a relative standard error greater than 50% and is considered too unreliable for general use

— nil or rounded to zero (including null cells)

EMPLOYEES (EXCLUDING OMIES) WHO STARTED THEIR CURRENT JOB IN THE PREVIOUS 12 MONTHS, All steps taken to attain a job(a)(b)—By whether first job ever held lasting two weeks or more

All steps taken to attain a job(a)(b)	HAD WORKED BEFORE AND WAS OUT OF WORK PRIOR TO STARTING JOB			HAD WORKED BEFORE AND CHANGED EMPLOYER TO START JOB		
	Males	Females	Persons	Males	Females	Persons
PERSONS ('000)						
Wrote, phoned or applied in person to an employer for work	151.1	156.4	307.5	163.7	183.7	347.4
Answered an advertisement for a job in a newspaper	87.5	81.8	169.3	54.8	63.0	117.9
Answered an advertisement for a job on the Internet	110.0	116.4	226.4	90.6	106.3	196.9
Answered an advertisement for a job on Centrelink touchscreens	16.8	*3.3	20.1	**1.5	**1.9	*3.5
Answered an advertisement for a job on workplace noticeboards	12.2	10.1	22.3	*3.6	*6.3	9.9
Contacted friends or relatives	90.0	72.7	162.8	90.3	76.8	167.1
Advertised or tendered for work	*7.6	9.2	16.8	*7.2	*7.5	14.7
Registered with a Job Network employment agency	69.1	51.3	120.4	21.2	22.3	43.5
Registered with other employment agency	39.9	36.3	76.2	28.0	32.1	60.0
Checked with a Job Network employment agency	58.5	36.8	95.3	20.1	18.6	38.8
Checked with other employment agency	43.4	33.8	77.2	22.7	26.7	49.4
Looked at advertisements for jobs in a newspaper	128.8	116.7	245.5	86.2	103.5	189.7
Looked at advertisements for jobs on the Internet	139.0	140.5	279.5	118.2	140.8	259.1
Looked at advertisements for jobs on Centrelink touchscreens	34.2	9.4	43.6	*4.4	*7.0	11.4
Looked at advertisements for jobs on workplace noticeboards	23.7	20.2	43.9	*7.7	13.5	21.1
Registered with Centrelink as a job seeker	60.8	46.2	107.0	13.4	20.4	33.8
Other	21.0	20.7	41.7	27.5	33.7	61.1
Did not take steps to attain a job(c)	42.6	40.1	82.6	79.6	80.7	160.3
Total	225.6	238.1	463.8	298.4	323.8	622.2

PERSONS (%)						
Wrote, phoned or applied in person to an employer for work	67.0	65.7	66.3	54.8	56.7	55.8
Answered an advertisement for a job in a newspaper	38.8	34.4	36.5	18.4	19.5	18.9
Answered an advertisement for a job on the Internet	48.8	48.9	48.8	30.3	32.8	31.6
Answered an advertisement for a job on Centrelink touchscreens	7.4	*1.4	4.3	**0.5	**0.6	*0.6
Answered an advertisement for a job on workplace noticeboards	5.4	4.3	4.8	*1.2	*1.9	1.6
Contacted friends or relatives	39.9	30.5	35.1	30.3	23.7	26.9
Advertised or tendered for work	*3.4	3.8	3.6	*2.4	*2.3	2.4
Registered with a Job Network employment agency	30.6	21.5	26.0	7.1	6.9	7.0
Registered with other employment agency	17.7	15.2	16.4	9.4	9.9	9.6
Checked with a Job Network employment agency	25.9	15.5	20.6	6.7	5.8	6.2
Checked with other employment agency	19.2	14.2	16.6	7.6	8.2	7.9
Looked at advertisements for jobs in a newspaper	57.1	49.0	52.9	28.9	32.0	30.5
Looked at advertisements for jobs on the Internet	61.6	59.0	60.3	39.6	43.5	41.6
Looked at advertisements for jobs on Centrelink touchscreens	15.2	3.9	9.4	*1.5	*2.2	1.8
Looked at advertisements for jobs on workplace noticeboards	10.5	8.5	9.5	*2.6	4.2	3.4
Registered with Centrelink as a job seeker	26.9	19.4	23.1	4.5	6.3	5.4
Other	9.3	8.7	9.0	9.2	10.4	9.8
Did not take steps to attain a job(c)	18.9	16.8	17.8	26.7	24.9	25.8
Total	100.0	100.0	100.0	100.0	100.0	100.0

* estimate has a relative standard error of 25% to 50% and should be used with caution

** estimate has a relative standard error greater than 50% and is considered too unreliable for general use

(a) Refers to all steps taken to attain a job, therefore people may appear in more than one category.

(b) Refers to all steps taken to attain a job, not necessarily the current or main job.

(c) Includes people who were approached by their employer.

EMPLOYEES (EXCLUDING OMIES) WHO STARTED THEIR CURRENT JOB IN THE PREVIOUS 12 MONTHS, All steps taken to attain a job(a)(b)—By whether first job ever held lasting two weeks or more *continued*

All steps taken to attain a job(a)(b)	FIRST JOB EVER HELD			TOTAL		
	Males	Females	Persons	Males	Females	Persons
PERSONS ('000)						
Wrote, phoned or applied in person to an employer for work	35.2	28.0	63.2	349.9	368.2	718.1
Answered an advertisement for a job in a newspaper	11.1	8.7	19.8	153.4	153.6	307.0
Answered an advertisement for a job on the Internet	19.1	12.1	31.1	219.6	234.8	454.4
Answered an advertisement for a job on Centrelink touchscreens	**0.8	—	**0.8	19.1	*5.2	24.3
Answered an advertisement for a job on workplace noticeboards	**1.8	*4.6	*6.4	17.6	21.0	38.6
Contacted friends or relatives	25.7	15.2	41.0	206.1	164.8	370.8
Advertised or tendered for work	**1.5	*2.4	*3.8	16.3	19.1	35.3
Registered with a Job Network employment agency	*4.0	*4.5	*8.5	94.4	78.1	172.5
Registered with other employment agency	*5.3	**1.5	*6.8	73.2	69.8	143.0
Checked with a Job Network employment agency	*3.3	*4.3	*7.7	82.0	59.8	141.7
Checked with other employment agency	*5.6	**1.3	*6.8	71.6	61.8	133.4
Looked at advertisements for jobs in a newspaper	17.3	12.2	29.5	232.3	232.5	464.8
Looked at advertisements for jobs on the Internet	26.6	17.7	44.3	283.8	299.0	582.9
Looked at advertisements for jobs on Centrelink touchscreens	**0.8	**0.8	**1.6	39.4	17.2	56.6
Looked at advertisements for jobs on workplace noticeboards	*3.5	*6.7	10.1	34.8	40.3	75.2
Registered with Centrelink as a job seeker	*4.5	*4.8	9.3	78.7	71.4	150.1
Other	*5.7	*5.3	11.0	54.2	59.7	113.8
Did not take steps to attain a job(c)	9.5	8.7	18.2	131.7	129.5	261.2
Total	62.3	49.3	111.6	586.3	611.2	1 197.6

PERSONS (%)						
Wrote, phoned or applied in person to an employer for work	56.5	56.8	56.6	59.7	60.2	60.0
Answered an advertisement for a job in a newspaper	17.8	17.7	17.7	26.2	25.1	25.6
Answered an advertisement for a job on the Internet	30.6	24.4	27.9	37.5	38.4	37.9
Answered an advertisement for a job on Centrelink touchscreens	**1.3	—	**0.7	3.3	*0.9	2.0
Answered an advertisement for a job on workplace noticeboards	**2.9	*9.3	*5.8	3.0	3.4	3.2
Contacted friends or relatives	41.3	30.9	36.7	35.1	27.0	31.0
Advertised or tendered for work	**2.3	*4.8	*3.4	2.8	3.1	3.0
Registered with a Job Network employment agency	*6.4	*9.1	*7.6	16.1	12.8	14.4
Registered with other employment agency	*8.5	**3.0	*6.1	12.5	11.4	11.9
Checked with a Job Network employment agency	*5.4	*8.8	*6.9	14.0	9.8	11.8
Checked with other employment agency	*8.9	**2.6	*6.1	12.2	10.1	11.1
Looked at advertisements for jobs in a newspaper	27.7	24.8	26.5	39.6	38.0	38.8
Looked at advertisements for jobs on the Internet	42.7	36.0	39.7	48.4	48.9	48.7
Looked at advertisements for jobs on Centrelink touchscreens	**1.3	**1.6	**1.4	6.7	2.8	4.7
Looked at advertisements for jobs on workplace noticeboards	*5.6	*13.5	9.1	5.9	6.6	6.3
Registered with Centrelink as a job seeker	*7.3	*9.7	8.4	13.4	11.7	12.5
Other	*9.1	*10.7	9.8	9.2	9.8	9.5
Did not take steps to attain a job(c)	15.3	17.6	16.3	22.5	21.2	21.8
Total	100.0	100.0	100.0	100.0	100.0	100.0

* estimate has a relative standard error of 25% to 50% and should be used with caution

** estimate has a relative standard error greater than 50% and is considered too unreliable for general use

— nil or rounded to zero (including null cells)

(a) Refers to all steps taken to attain a job, therefore people may appear in more than one category.

(b) Refers to all steps taken to attain a job, not necessarily the current or main job.

(c) Includes people who were approached by their employer.

	<i>NSW</i>	<i>Vic.</i>	<i>Qld</i>	<i>SA</i>	<i>WA</i>	<i>Tas.</i>	<i>NT</i>	<i>ACT</i>	<i>Aust.</i>
	'000	'000	'000	'000	'000	'000	'000	'000	'000
MALES									
Population 1									
Unemployed persons	109.1	94.6	67.3	24.2	38.7	4.9	2.9	3.5	345.2
Population 2									
Employed persons who started their current job in the previous 12 months	200.8	143.9	171.0	41.8	79.1	13.3	8.1	12.8	670.7
Population 3									
Employees (excluding OMIEs) who started their current job in the previous 12 months	176.4	128.5	146.3	36.4	68.4	11.9	7.4	11.2	586.3
FEMALES									
Population 1									
Unemployed persons	87.5	58.9	53.7	17.4	27.1	4.3	2.5	3.0	254.4
Population 2									
Employed persons who started their current job in the previous 12 months	186.4	156.7	167.5	47.9	79.3	14.0	7.6	13.3	672.6
Population 3									
Employees (excluding OMIEs) who started their current job in the previous 12 months	170.9	141.6	151.6	43.9	70.4	13.1	7.2	12.5	611.2
PERSONS									
Population 1									
Unemployed persons	196.6	153.6	121.0	41.6	65.8	9.2	5.4	6.5	599.6
Population 2									
Employed persons who started their current job in the previous 12 months	387.1	300.6	338.5	89.7	158.3	27.2	15.7	26.2	1 343.4
Population 3									
Employees (excluding OMIEs) who started their current job in the previous 12 months	347.3	270.1	298.0	80.3	138.8	24.9	14.5	23.8	1 197.6

EXPLANATORY NOTES

INTRODUCTION

1 The statistics in this publication were compiled from data collected in the Job Search Experience Survey, conducted throughout Australia in July 2009 as a supplement to the Australian Bureau of Statistics (ABS) monthly Labour Force Survey (LFS). Respondents to the LFS who fell within the scope of the supplementary survey were asked further questions.

2 The publication *Labour Force, Australia* (cat. no. 6202.0) contains information about survey design, sample redesign, scope, coverage and population benchmarks relevant to the monthly LFS, which also apply to supplementary surveys. It also contains definitions of demographic and labour force characteristics, and information about telephone interviewing which are relevant to both the monthly LFS and supplementary surveys.

CONCEPTS, SOURCES AND METHODS

3 The conceptual framework used in Australia's LFS aligns closely with the standards and guidelines set out in Resolutions of the International Conference of Labour Statisticians. Descriptions of the underlying concepts and structure of Australia's labour force statistics, and the sources and methods used in compiling these estimates, are presented in *Labour Statistics: Concepts, Sources and Methods* (cat. no. 6102.0.55.001).

SCOPE

4 The scope of the LFS is restricted to people aged 15 years and over and excludes the following people:

- members of the permanent defence forces
- certain diplomatic personnel of overseas governments, customarily excluded from the census and estimated populations
- overseas residents in Australia
- members of non-Australian defence forces (and their dependants).

5 Students at boarding schools, patients in hospitals, residents of homes (e.g. retirement homes, homes for people with disabilities), and inmates of prisons are excluded from all supplementary surveys.

6 This supplementary survey was conducted in both urban and rural areas in all states and territories, but excluded people living in Indigenous communities in very remote parts of Australia.

7 The survey only relates to people who were unemployed in July 2009, and people employed in July 2009 who started their current job in the previous 12 months.

COVERAGE

8 The estimates in this publication relate to people covered by the survey in July 2009. In the LFS, coverage rules are applied which aim to ensure that each person is associated with only one dwelling, and hence has only one chance of selection in the survey. See *Labour Force, Australia* (cat. no. 6202.0) for more details.

SAMPLE SIZE

9 Supplementary surveys are not always conducted on the full LFS sample. Since August 1994 the sample for supplementary surveys has been restricted to no more than seven-eighths of the LFS sample.

10 The LFS sample size in July 2009 was approximately one-third smaller than the sample size in July 2007. This is due to an 11% sample reduction that was implemented from November 2007 to June 2008 based on the 2006 sample design, and an additional 24% sample reduction implemented in July 2008. Detailed information about the sample reduction is provided in *Information Paper: Labour Force Survey Sample Design, Nov 2007 (Second edition)* (cat. no. 6269.0).

11 The reduced sample will still be representative, with selections made across all parts of Australia.

EXPLANATORY NOTES *continued*

SAMPLE SIZE *continued*

12 The initial sample for the July 2009 LFS consisted of 27,410 private dwelling households and special dwelling units. Of the 21,910 private dwelling households and special dwelling units that remained in the survey after sample loss (e.g. households selected in the survey which had no residents in scope for the LFS, vacant or derelict dwellings and dwellings under construction), approximately 21,034 or 96.0% were fully responding to the Job Search Experience Survey. The number of completed interviews obtained from these private dwellings and special dwelling units (after taking into account scope, coverage and sub-sampling exclusions) was 4,024.

RELIABILITY OF THE ESTIMATES

13 Estimates in this publication are subject to sampling and non-sampling errors:

- Sampling error is the difference between the published estimate and the value that would have been produced if all dwellings had been included in the survey. For more information see the Technical Note.
- Non-sampling errors are inaccuracies that occur because of imperfections in reporting by respondents and interviewers, and errors made in coding and processing data. These inaccuracies may occur in any enumeration, whether it be a full count or a sample. Every effort is made to reduce the non-sampling error to a minimum by careful design of questionnaires, intensive training and supervision of interviewers and effective processing procedures.

SEASONAL FACTORS

14 The estimates are based on information collected in the survey month and, due to seasonal factors, may not be representative of other months of the year.

CLASSIFICATIONS USED

15 Country of birth data are classified according to the *Standard Australian Classification of Countries (SACC), 1998* (cat. no. 1269.0).

16 From 2006, occupation data are classified according to ANZSCO—*Australian and New Zealand Standard Classification of Occupations, First Edition, 2006* (cat. no. 1220.0). This new classification replaces ASCO—*Australian Standard Classification of Occupations, Second Edition, 1997* (cat. no. 1220.0).

17 Also from 2006, industry data are classified according to the *Australian and New Zealand Standard Industrial Classification (ANZSIC), 2006* (cat. no. 1292.0). This new classification replaces the *Australian and New Zealand Standard Industrial Classification (ANZSIC), 1993* (cat. no. 1292.0).

18 Educational attainment data are classified according to the *Australian Standard Classification of Education (ASCED)* (cat. no. 1272.0). See Appendix 1 for further information.

NOTES ON ESTIMATES

19 Employees are classified as 'with paid leave entitlements' if they said 'yes' to either of the following questions:

- 'Does your employer provide you with paid sick leave?'
- 'Does your employer provide you with paid holiday leave?'

In all other cases, employees are categorised as 'without paid leave entitlements'.

COMPARABILITY OF TIME SERIES

20 Revisions are made to population benchmarks for the LFS after each five-yearly Census of Population and Housing. The last such revision was made in February 2004 to take account of the results of the 2001 Census of Population and Housing. Estimates from supplementary surveys conducted from and including February 2004 are therefore based on revised population benchmarks.

COMPARABILITY WITH MONTHLY LFS STATISTICS

21 Due to differences in the scope and sample size of this supplementary survey and that of the monthly LFS, the estimation procedure may lead to some small variations between labour force estimates from this survey and those from the LFS.

EXPLANATORY NOTES *continued*

COMPARABILITY WITH PREVIOUS SURVEYS

22 From July 2004, a change has been made to the category 'considered too young or too old by employers' for the data items 'all difficulties in finding work' and 'main difficulty in finding work'. The category has been split into 'considered too young by employers' and 'considered too old by employers'. Data for 'considered too young by employers' is not published separately in all relevant tables, but are available on request.

23 The data item 'number of children in family aged under 15 years' was added in 2009.

PREVIOUS SURVEYS

24 JSE was first conducted in July 2002. Results of similar surveys on the job search experience of unemployed people conducted in July 1984, July 1985, June 1986, July 1988, July 1990, June 1991, and annually from July 1992 to July 2001 were published in various issues of *Job Search Experience of Unemployed Persons, Australia* (cat. no. 6222.0). Information on people who had started work for an employer for wages or salary during the 12 months up to the end of the reference week was collected in June 1986, and two-yearly from July 1990 to July 2000 and were published in *Successful and Unsuccessful Job Search Experience, Australia* (cat. no. 6245.0).

NEXT SURVEY

25 The ABS plans to conduct this survey again in July 2010.

ACKNOWLEDGMENT

26 ABS publications draw extensively on information provided freely by individuals, businesses, governments and other organisations. Their continued cooperation is very much appreciated: without it, the wide range of statistics published by the ABS would not be available. Information received by the ABS is treated in strict confidence as required by the *Census and Statistics Act 1905*.

RELATED PUBLICATIONS

27 ABS publications which may also be of interest include:

- *Australian Labour Market Statistics* (cat. no. 6105.0)
- *Labour Force, Australia* (cat. no. 6202.0)
- *Labour Force Experience, Australia* (cat. no. 6206.0)
- *Labour Mobility, Australia* (cat. no. 6209.0)
- *Labour Statistics: Concepts, Sources and Methods* (cat. no. 6102.0.55.001)
- *Persons Not in the Labour Force, Australia* (cat. no. 6220.0)
- *Underemployed Workers, Australia* (cat. no. 6265.0)

28 Current publications and other products released by the ABS are available from the Statistics Page on the ABS website. The ABS also issues a daily Release Advice on the website which details products to be released in the week ahead.

APPENDIX 1 CLASSIFICATION OF EDUCATION

CLASSIFICATION OF EDUCATION

In 2001, the *ABS Classification of Qualifications (ABSCQ)* (cat. no. 1262.0) was replaced by the *Australian Standard Classification of Education (ASCED)* (cat. no. 1272.0). The ASCED is a national standard classification which can be applied to all sectors of the Australian education system including schools, vocational education and training and higher education. ASCED replaces a number of classifications previously used in administrative and statistical systems, including the ABSCQ. The ASCED comprises two classifications: Level of Education and Field of Education.

Level of Highest Educational Attainment can be derived from information on Highest Year of School Completed and Level of Highest Non-school Qualification. The derivation process determines which of the 'non-school' or 'school' attainments will be regarded as the highest. Usually the higher ranking attainment will be self-evident, but in some cases some Secondary Education is regarded, for the purposes of obtaining a single measure, as higher than some Certificate level attainments.

The following decision table is used to determine which of the responses to questions on Highest Year of School Completed (coded to ASCED Broad Level 6) and Level of Highest Non-school Qualification (coded to ASCED Broad Level 5) will be regarded as the highest. It is emphasised that this table was designed for the purpose of obtaining a single value for the output variable Level of Highest Educational Attainment and is not intended to convey any other ordinality.

Decision Table: Level of Highest Educational Attainment							
ASCED LEVEL OF EDUCATION CODES	Certificate n.f.d. (500)	Certificate III or IV n.f.d. (510)	Certificate IV (511)	Certificate III (514)	Certificate I or II n.f.d. (520)	Certificate II (521)	Certificate I (524)
Secondary Education n.f.d. (600)	Certificate n.f.d.	Certificate III or IV n.f.d.	Certificate IV	Certificate III	Certificate I or II n.f.d.	Certificate II	Certificate I
Senior Secondary Education n.f.d. (610)	Senior Secondary n.f.d.	Certificate III or IV n.f.d.	Certificate IV	Certificate III	Senior Secondary n.f.d.	Senior Secondary n.f.d.	Senior Secondary n.f.d.
Year 12 (611)	Year 12	Certificate III or IV n.f.d.	Certificate IV	Certificate III	Year 12	Year 12	Year 12
Year 11 (613)	Year 11	Certificate III or IV n.f.d.	Certificate IV	Certificate III	Year 11	Year 11	Year 11
Junior Secondary Education n.f.d. (620)	Certificate n.f.d.	Certificate III or IV n.f.d.	Certificate IV	Certificate III	Certificate I or II n.f.d.	Certificate II	Certificate I
Year 10 (621)	Year 10	Certificate III or IV n.f.d.	Certificate IV	Certificate III	Year 10	Certificate II	Year 10
Year 9 (622)	Certificate n.f.d.	Certificate III or IV n.f.d.	Certificate IV	Certificate III	Certificate I or II n.f.d.	Certificate II	Certificate I
Year 8 (623)	Certificate n.f.d.	Certificate III or IV n.f.d.	Certificate IV	Certificate III	Certificate I or II n.f.d.	Certificate II	Certificate I
Year 7 (624)	Certificate n.f.d.	Certificate III or IV n.f.d.	Certificate IV	Certificate III	Certificate I or II n.f.d.	Certificate II	Certificate I

The decision table is also used to rank the information provided in a survey about the qualifications and attainments of a single individual. It does not represent any basis for comparison between differing qualifications. For example, a person whose Highest Year of School Completed was Year 12, and whose Level of Highest Non-school Qualification was a Certificate III, would have those responses crosschecked on the decision table and would as a result have their Level of Highest Educational Attainment output as

APPENDIX 1 CLASSIFICATION OF EDUCATION *continued*

CLASSIFICATION OF EDUCATION *continued*

Certificate III. However, if the same person answered 'Certificate' to the highest non-school qualification question, without offering any further detail, it would be crosschecked against Year 12 on the decision table as 'Certificate not further defined'. The output would then be 'Year 12'. The decision table, therefore, does not necessarily imply that one qualification is 'higher' than the other.

APPENDIX 2 POPULATIONS AND DATA ITEMS LIST

DATA AVAILABLE ON REQUEST

The ABS has a range of data available on request from the Job Search Experience Survey. This section lists the data items and populations which relate to the survey. More detailed breakdowns of some data items are also available on request.

The population(s) for a particular data item refers to the people in the survey to whom the data relates. Where alternative output categories are available for the same data item, these are shown and the data item name is followed by a bracketed numeral (e.g. Country of birth (2)).

For more information about ABS data available on request, contact Labour Market Statistics on Canberra (02) 6252 7206, or by facsimile (02) 6252 7102, or by email to <labourstatistics@abs.gov.au>.

Population 1

Unemployed persons.

Population 2

Employed persons who started their current job in the previous 12 months.

Population 3

Employees (excluding owner managers of incorporated enterprises) who started their current job in the previous 12 months.

<i>Data items</i>	<i>Populations</i>	<i>Data items</i>	<i>Populations</i>
1 State or territory of usual residence	All	6 Relationship in household	All
New South Wales		Non-family member	
Victoria		Lone person	
Queensland		Not living alone	
South Australia		Relationship not determined	
Western Australia			
Tasmania		7A Country of birth and period of arrival	All
Northern Territory		Born in Australia	
Australian Capital Territory		Born overseas	
2 Area of usual residence	All	Arrived before 1971	
State capital city		Arrived 1971–1980	
Balance of state/territory		Arrived 1981–1990	
3 Region of usual residence	All	Arrived 1991–2000	
Standard labour force dissemination regions		Arrived 2001 to survey date	
4 Sex	All	7B Country of birth (1)	All
Males		Born in Australia	
Females		Born overseas	
5 Marital status	All	Born in main English-speaking countries	
Married		Born in other than main English-speaking countries	
Not married		7C Country of birth (2)	All
6 Relationship in household	All	Born in Australia	
Family member		Born overseas	
Husband, wife or partner		Oceania and Antarctica	
With dependants		North-West Europe	
Without dependants		Southern and Eastern Europe	
Lone parent		North Africa and the Middle East	
With dependants		South-East Asia	
Without dependants		North-East Asia	
Dependent student		Southern and Central Asia	
Non-dependent child		Americas	
Other related individual		Sub-Saharan Africa	

APPENDIX 2 POPULATIONS AND DATA ITEMS LIST *continued*

<i>Data items</i>	<i>Populations</i>	<i>Data items</i>	<i>Populations</i>
8 Age group (years)	All	11 Level of highest non-school qualification <i>cont.</i>	All
15–19		With a non-school qualification <i>cont.</i>	
20–24		Bachelor Degree	
25–34		Advanced Diploma/Diploma	
35–44		Certificate III/IV	
45–54		Certificate I/II	
55–59		Certificate not further defined	
60–64		Level not determined	
65 and over		Without a non-school qualification	
Note: Age collected in single years.			
9 Number of children in family aged under 15 years		12 Highest year of school completed	All
Had children under 15 years		Year 12	
1 child		Year 11	
2 children		Year 10	
3 children		Year 9	
4 children		Year 8 or below	
5 children		Never attended school	
6 or more children			
Did not have children under 15 years		13 Highest non-school qualification and whether qualification obtained overseas or within Australia	All
		Born in Australia	
10 Level of highest educational attainment	All	Born overseas	
Postgraduate Degree		With a non-school qualification	
Graduate Diploma/Graduate Certificate		Qualification obtained overseas	
Bachelor Degree		Qualification obtained in Australia	
Advanced Diploma/Diploma		Without a non-school qualification	
Certificate III/IV			
Certificate I/II		14A Number of jobs started in the previous 12 months	All
Certificate not further defined		None	
Year 12		One	
Year 11		Two	
Year 10 or below		Three or more	
Other education			
Level not determined		14B Number of jobs lasting two weeks or more started in the previous 12 months	All
No educational attainment		None	
11 Level of highest non-school qualification	All	One	
With a non-school qualification		Two	
Postgraduate Degree		Three or more	
Graduate Diploma/Graduate Certificate			

APPENDIX 2 POPULATIONS AND DATA ITEMS LIST *continued*

<i>Data items</i>	<i>Populations</i>	<i>Data items</i>	<i>Populations</i>
15 All steps taken to find work/attain a job	1,3	18 Duration of current period of unemployment	1
Wrote, phoned or applied in person to an employer for work		Under 1 year	
Answered an advertisement for a job in a newspaper		1 and under 4 weeks	
Answered an advertisement for a job on the Internet		4 and under 8 weeks	
Answered an advertisement for a job on Centrelink touchscreens		8 and under 13 weeks	
Answered an advertisement for a job on workplace noticeboards		13 and under 26 weeks	
Contacted friends or relatives		26 and under 39 weeks	
Advertised or tendered for work		39 and under 52 weeks	
Registered with a Job Network employment agency		1 year and over	
Registered with other employment agency		1 and under 2 years	
Checked with a Job Network employment agency		2 years and over	
Checked with other employment agency			
Looked at advertisements for jobs in a newspaper		19 Whether has been registered with Centrelink as a job seeker	1
Looked at advertisements for jobs on the Internet		Has been registered with centrelink as a job seeker	
Looked at advertisements for jobs on Centrelink touchscreens		Has not been registered with Centrelink as a job seeker	
Looked at advertisements for jobs on workplace noticeboards			
Registered with Centrelink as a job seeker		20A All steps taken to find work	1
Other		Wrote, phoned or applied in person to an employer for work	
Did not take steps to find work/attain a job		Answered an advertisement for a job in a newspaper	
Note: Multiple response category. People may appear in more than one category.		Answered an advertisement for a job on the Internet	
		Answered an advertisement for a job on Centrelink touchscreens	
16 Whether looked for full-time or part-time work	1	Answered an advertisement for a job on workplace noticeboards	
Looked for full-time work		Contacted friends or relatives	
Looked for part-time work		Advertised or tendered for work	
		Registered with a Job Network employment agency	
17 Preferred number of hours	1	Registered with other employment agency	
1–15		Checked with a Job Network employment agency	
16–29		Checked with other employment agency	
30–34		Looked at advertisements for jobs in a newspaper	
35–39		Looked at advertisements for jobs on the Internet	
40		Looked at advertisements for jobs on Centrelink touchscreens	
41–44		Looked at advertisements for jobs on workplace noticeboards	
45–48		Registered with Centrelink as a job seeker	
49 or more		Other	
Did not know		Did not take steps to find work	
Note: Collected in single hours.		Note: Multiple response category. People may appear in more than one category.	

APPENDIX 2 POPULATIONS AND DATA ITEMS LIST *continued*

<i>Data items</i>	<i>Populations</i>	<i>Data items</i>	<i>Populations</i>
20B Active steps taken to find work	1	21 Number of offers of employment in the current period of unemployment	1
Wrote, phoned or applied in person to an employer for work		None	
Answered an advertisement for a job in a newspaper		One	
Answered an advertisement for a job on the Internet		Two	
Answered an advertisement for a job on Centrelink touchscreens		Three or more	
Answered an advertisement for a job on workplace noticeboards		22A All difficulties in finding work	1
Contacted friends or relatives		Too many applicants for available jobs	
Advertised or tendered for work		Lacked necessary skills or education	
Registered with a Job Network employment agency		Considered too young by employers	
Registered with other employment agency		Considered too old by employers	
Registered with Centrelink as a job seeker		Insufficient work experience	
Took no active steps		No vacancies at all	
Note: Multiple response category. People may appear in more than one category.		No vacancies in line of work	
20C Active steps taken to find work and whether has been registered with a Job Network employment agency	1	Too far to travel/transport problems	
Has been registered with a Job Network employment agency		Own ill health or disability	
Wrote, phoned or applied in person to an employer for work		Language difficulties	
Answered an advertisement for a job in a newspaper		Unsuitable hours	
Answered an advertisement for a job on the Internet		Difficulties with finding child care	
Answered an advertisement for a job on Centrelink touchscreens		Other family responsibilities	
Answered an advertisement for a job on workplace noticeboards		Difficulties because of ethnic background	
Contacted friends or relatives		Other difficulties	
Advertised or tendered for work		No difficulties at all	
Took no active steps		No feed back from employers	
Has not been registered with a Job Network employment agency		Note: Multiple response category. People may appear in more than one category.	
Note: Multiple response category. People may appear in more than one category.		22B Main difficulty in finding work	1
20D Whether has been registered with a Job Network employment agency	1	Too many applicants for available jobs	
Has been registered with a Job Network employment agency		Lacked necessary skills or education	
Has not been registered with a Job Network employment agency		Considered too young by employers	
		Considered too old by employers	
		Insufficient work experience	
		No vacancies at all	
		No vacancies in line of work	
		Too far to travel/transport problems	
		Own ill health or disability	
		Language difficulties	
		Unsuitable hours	
		Difficulties with finding child care	
		Other family responsibilities	
		Difficulties because of ethnic background	
		No feedback from employers	
		Other difficulties	
		No difficulties at all	

APPENDIX 2 POPULATIONS AND DATA ITEMS LIST *continued*

<i>Data items</i>	<i>Populations</i>	<i>Data items</i>	<i>Populations</i>
23 Number of spells of looking for work in the previous 12 months	1	28 Industry of last job	1
One		Last job less than 2 years ago	
Two		Agriculture, forestry and fishing	
Three or more		Mining	
		Manufacturing	
24 Time spent looking for work in the previous 12 months	1	Electricity, gas, water and waste services	
1 and under 2 weeks		Construction	
2 and under 4 weeks		Wholesale trade	
4 and under 8 weeks		Retail trade	
8 and under 13 weeks		Accommodation and food services	
13 and under 26 weeks		Transport, postal and warehousing	
26 and under 39 weeks		Information media and telecommunications	
39 and under 52 weeks		Financial and insurance services	
25 Whether had ever worked for two weeks or more	1	Rental, hiring and real estate services	
Had previously worked		Professional, scientific and technical services	
Last job less than 2 years ago		Administrative and support services	
Last job 2 years or more ago		Public administration and safety	
Had never worked		Education and training	
26 Status in employment of last job	1	Health care and social assistance	
Last job less than 2 years ago		Arts and recreation services	
Employee (including OMIE)		Other services	
Employer			
Own account worker		Last job 2 or more years ago	
Contributing family worker		Had never worked	
Unpaid voluntary worker		29 Whether worked full-time or part-time in last job	1
Last job 2 or more years ago		Worked full-time	
Had never worked		Worked part-time	
27 Occupation of last job	1	Had never worked	
Last job less than 2 years ago		30 Duration of last job	1
Managers		Last job less than 2 years ago	
Professionals		Less than 1 year	
Technicians and trades workers		2 and under 4 weeks	
Community and personal service workers		4 and under 8 weeks	
Clerical and administrative workers		8 and under 26 weeks	
Sales workers		26 and under 52 weeks	
Machinery operators and drivers		1 and under 2 years	
Labourers		2 and under 5 years	
Unpaid voluntary workers		5 years and over	
Last job 2 or more years ago		Last job 2 or more years ago	
Had never worked		Unpaid voluntary worker	
		Had never worked	

APPENDIX 2 POPULATIONS AND DATA ITEMS LIST *continued*

<i>Data items</i>	<i>Populations</i>	<i>Data items</i>	<i>Populations</i>
31 Reason for ceasing last job	1	36 Month started current job <i>cont.</i>	2,3
Last job less than 2 years ago		March 2009	
Job loser		April 2009	
Laid off or retrenched		May 2009	
Job was temporary or seasonal		June 2009	
Own ill health or disability		July 2009	
Own business closed down for economic reasons			
Job leaver		37 Duration of looking for work before current job	2,3
Unsatisfactory work arrangements		Less than 1 year	
Holiday job/returned to studies		1 and under 4 weeks	
Other		4 and under 8 weeks	
Unpaid voluntary worker		8 and under 13 weeks	
Last job 2 or more years ago		13 and under 26 weeks	
Had never worked		26 and under 52 weeks	
		1 and under 2 years	
32 Whether had job to go to lasting two weeks or more	1	2 and under 5 years	
Had a job to go to		5 years and over	
Did not have a job to go to		Did not look for work	
		Note: Available in single weeks/years.	
33 Status in employment in current job	2	38 Occupation of current job	2,3
Employees (including OMIEs)		Managers	
Employers		Professionals	
Own account workers		Associate professionals	
Contributing family workers		Technicians and trades workers	
		Community and personal service workers	
34 Employment type in main job	2,3	Clerical and administrative workers	
Employees (excluding OMIEs)		Sales workers	
Owner managers of incorporated enterprises		Machinery operators and drivers	
Owner managers of unincorporated enterprises		Labourers	
Contributing family workers			
		39 Full-time or part-time status of current employment	2,3
35 Employment type in current job	2,3	Full-time worker	
Employees (excluding OMIEs)		Part-time worker	
With paid leave entitlements			
Without paid leave entitlements		40 Whether preferred to work more hours than usually worked	2,3
Owner managers of incorporated enterprises		Usually worked part-time hours	
Owner managers of unincorporated enterprises		Preferred to work more hours	
Contributing family workers		Did not prefer to work more hours	
		Did not know	
36 Month started current job	2,3	Usually worked full-time hours	
July 2008			
August 2008		41 Whether had paid leave entitlements in current job	3
September 2008		With paid leave entitlements	
October 2008		Without paid leave entitlements	
November 2008			
December 2008		42 Whether entitled to paid sick leave in current job	3
January 2009		Entitled to paid sick leave	
February 2009		Not entitled to paid sick leave	
		Did not know	

APPENDIX 2 POPULATIONS AND DATA ITEMS LIST *continued*

<i>Data items</i>	<i>Populations</i>	<i>Data items</i>	<i>Populations</i>
43 Whether entitled to paid holiday leave in current job	3	45 All steps taken to attain a job cont.	3
Entitled to paid holiday leave		Other	
Not entitled to paid holiday leave		Did not take steps to attain a job	
Did not know		Note: Multiple response category. People may appear in more than one category.	
44 Whether first job ever held lasting two weeks or more	3	46 Whether job seeker approached employer	3
First job ever held		Job seeker approached employer	
Had worked before		Employer approached job seeker	
Out of work prior to starting job			
Changed employer to start job		47 Whether had prior knowledge that current job was available	3
45 All steps taken to attain a job	3	Had prior knowledge that job or work was available	
Wrote, phoned or applied in person to an employer for work		Job Network employment agency	
Answered an advertisement for a job in a newspaper		Other employment agency	
Answered an advertisement for a job on the Internet		School programs	
Answered an advertisement for a job on Centrelink touchscreens		Careers service at educational institution	
Answered an advertisement for a job on workplace noticeboards		Advertisements in a newspaper	
Contacted friends or relatives		Advertisements on the Internet	
Advertised or tendered for work		Advertisements on Centrelink touchscreens	
Registered with a Job Network employment agency		Advertisements on workplace noticeboards	
Registered with other employment agency		Friends, relatives or company contacts	
Checked with a Job Network employment agency		Other sources	
Checked with other employment agency		Did not have prior knowledge that job was available	
Looked at advertisements for jobs in a newspaper		48 Role of Job Network in job attainment	3
Looked at advertisements for jobs on the Internet		Job Network helped job seeker to obtain job in some way	
Looked at advertisements for jobs on Centrelink touchscreens		Job Network did not help job seeker to obtain job in any way	
Looked at advertisements for jobs on workplace noticeboards		Did not know	
Registered with Centrelink as a job seeker		Did not use Job Network in job attainment	

APPENDIX 3 SUPPLEMENTARY SURVEYS

SUPPLEMENTARY SURVEYS

The Monthly Population Survey program and Multi-Purpose Household Survey program collect data on particular aspects of the labour force. The following is an historical list of labour surveys collected in these programs. Data from these surveys are available on request and can be obtained by contacting the ABS.

	<i>cat. no.</i>	<i>Frequency</i>	<i>Latest issue</i>
Monthly Population Supplementary Surveys			
Child Care, Australia	4402.0	Irregular	June 2005
Child Employment, Australia	6211.0	Irregular	June 2006
Education and Work, Australia	6227.0	Annual	May 2008
Employee Earnings, Benefits, and Trade Union Membership, Australia	6310.0	Annual	August 2008
Forms of Employment, Australia	6359.0	Annual	November 2008
Job Search Experience, Australia	6222.0	Annual	July 2009
Labour Force Experience, Australia	6206.0	Biennial	February 2009
Labour Force Status and Other Characteristics of Migrants, Australia	6250.0	Irregular	November 2007
Labour Mobility, Australia	6209.0	Biennial	February 2008
Locations of Work, Australia	6275.0	Irregular	November 2008
Multiple Jobholding, Australia(a)	6216.0	Irregular	August 1997
Persons Not in the Labour Force, Australia	6220.0	Annual	September 2008
Underemployed Workers, Australia	6265.0	Annual	September 2008
Working Time Arrangements, Australia(b)	6342.0	Irregular	November 2006
Multi-Purpose Household Surveys			
Barriers and Incentives to Labour Force Participation, Australia	6239.0	Biennial	2008–2009
Retirement and Retirement Intentions, Australia	6238.0	Biennial	2008–2009
Work-Related Injuries, Australia	6324.0	Irregular	2005–2006

(a) Latest data available on request July 2001.

(b) This product replaces the publication Working Arrangements, Australia (cat. no. 6342.0).

INTRODUCTION

1 Since the estimates in this publication are based on information obtained from occupants of a sample of dwellings, they are subject to sampling variability. That is, they may differ from those estimates that would have been produced if all dwellings had been included in the survey. One measure of the likely difference is given by the standard error (SE), which indicates the extent to which an estimate might have varied by chance because only a sample of dwellings was included. There are about two chances in three (67%) that a sample estimate will differ by less than one SE from the number that would have been obtained if all dwellings had been included, and about 19 chances in 20 (95%) that the difference will be less than two SEs. Another measure of the likely difference is the relative standard error (RSE), which is obtained by expressing the SE as a percentage of the estimate.

2 Due to space limitations, it is impractical to print the SE of each estimate in the publication. Instead, a table of SEs is provided to enable readers to determine the SE for an estimate from the size of that estimate (see table T1). The SE table is derived from a mathematical model, referred to as the 'SE model', which is created using data from a number of past Labour Force Surveys. It should be noted that the SE model only gives an approximate value for the SE for any particular estimate, since there is some minor variation between SEs for different estimates of the same size.

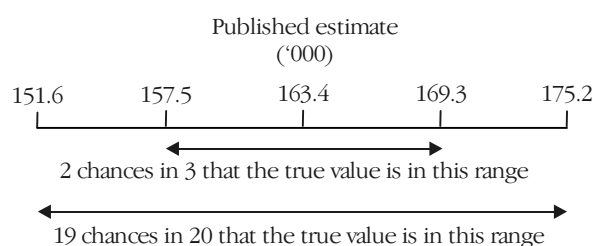
3 The LFS sample size in July 2009 was approximately one-third smaller than the sample size in July 2007. This is due to an 11% sample reduction that was implemented from November 2007 to June 2008 based on the 2006 sample design, and an additional 24% sample reduction implemented in July 2008. In combination, the two sample reductions are expected to increase the standard errors for estimates from the supplementary surveys by approximately 22% at the broad aggregate level, relative to the 2001 sample design (standard errors will vary at lower aggregate levels). Detailed information about the sample reduction is provided in *Information Paper: Labour Force Survey Sample Design, Nov 2007 (Second edition)* (cat. no. 6269.0).

CALCULATION OF STANDARD ERROR

4 An example of the calculation and the use of SEs in relation to estimates of persons is as follows. Table 4 shows the estimated number of unemployed women in Australia who were looking for full-time work was 163,400. Since this estimate is between 150,000 and 200,000, table T1 shows that the SE for Australia will lie between 5,700 and 6,400 and can be approximated by interpolation using the following general formula:

$$\begin{aligned}
 &SE \text{ of estimate} \\
 &= \text{lower SE} + \left(\left(\frac{\text{size of estimate} - \text{lower estimate}}{\text{upper estimate} - \text{lower estimate}} \right) \times (\text{upper SE} - \text{lower SE}) \right) \\
 &= 5,700 + \left(\left(\frac{163,400 - 150,000}{200,000 - 150,000} \right) \times (6,400 - 5,700) \right) \\
 &= 5,900 \text{ (rounded to the nearest 100)}
 \end{aligned}$$

5 Therefore, there are about two chances in three that the value that would have been produced if all dwellings had been included in the survey will fall within the range 157,500 to 169,300 and about 19 chances in 20 that the value will fall within the range 151,600 to 175,200. This example is illustrated in the diagram below.



CALCULATION OF STANDARD ERROR *continued*

6 In general, the size of the SE increases as the size of the estimate increases. Conversely, the RSE decreases as the size of the estimate increases. Very small estimates are thus subject to such high RSEs that their value for most practical purposes is unreliable. In the tables in this publication, only estimates with RSEs of 25% or less are considered reliable for most purposes. Estimates with RSEs greater than 25% but less than or equal to 50% are preceded by an asterisk (e.g. *3.4) to indicate they are subject to high SEs and should be used with caution. Estimates with RSEs of greater than 50%, preceded by a double asterisk (e.g. **0.2), are considered too unreliable for general use and should only be used to aggregate with other estimates to provide derived estimates with RSEs of less than 25%. Table T2 presents the levels at which estimates have RSEs of 25% and 50%.

MEANS AND MEDIANS

7 The RSEs of estimates of mean duration of unemployment and median duration of unemployment are obtained by first finding the RSE of the estimate of the total number of persons contributing to the mean or median (see table T1) and then multiplying the resulting number by the following factors for Australian estimates:

- mean duration of unemployment: 1.6
- median duration of unemployment: 2.5

8 The following is an example of the calculation of SEs where the use of a factor is required. Table 4 shows that the estimated median duration of unemployment for unemployed women in Australia was 14 weeks and shows that the number of unemployed women was estimated as 254,400. The SE of 254,400 can be calculated from table T1 (by interpolation) as 7,100. To convert this to an RSE we express the SE as a percentage of the estimate or $7,100/254,400 = 2.8\%$.

9 The RSE of the estimate of median duration of unemployment for unemployed women is calculated by multiplying this number (2.8%) by the appropriate factor shown in the previous paragraph (in this case 2.5): $2.8 \times 2.5 = 7\%$. The SE of this estimate of median duration of unemployment for unemployed women is therefore 7% of 14 weeks, i.e. almost one week. Therefore, there are two chances in three that the median duration of unemployment for women that would have been obtained if all dwellings had been included in the survey would have been within the range 13 to 15 weeks and about 19 chances in 20 that it would have been within the range 12 weeks to 16 weeks.

10 Table T2 represents the minimum size of estimates, based on the SE model described in paragraph 2, required to have RSEs of less than 25% and 50% respectively. For example, an estimate of median duration of unemployment for Australia based on less than 35,100 people will have an RSE of at least 25%, and an estimate of median duration of unemployment for Australia based on less than 12,500 will have an RSE of at least 50%. For all other estimates, (i.e. those estimates based purely on number of people in a specific category), an estimate of less than 8,600 for the Australian total will have an RSE of at least 25% and an estimate of less than 2,300 will have an RSE of at least 50%.

PROPORTIONS AND PERCENTAGES

11 Proportions and percentages formed from the ratio of two estimates are also subject to sampling errors. The size of the error depends on the accuracy of both the numerator and the denominator. A formula to approximate the RSE of a proportion is given below. This formula is only valid when x is a subset of y:

$$RSE\left(\frac{x}{y}\right) = \sqrt{[RSE(x)]^2 - [RSE(y)]^2}$$

12 Considering the example from the previous page, of the 163,400 unemployed women who were looking for full-time work, 27,000 or 16.5% had been unemployed for one year or more. The SE of 27,000 may be calculated by interpolation as 3,200. To convert this to an RSE we express the SE as a percentage of the estimate, or $3,200/27,000$

PROPORTIONS AND
PERCENTAGES *continued*

= 11.9%. The SE for 163,400 was calculated previously as 5,900, which converted to an RSE is $5,900/163,400 = 3.6\%$. Applying the above formula, the RSE of the proportion is:
 $RSE = \sqrt{(11.9)^2 - (3.6)^2} = 11.3\%$

13 Therefore, the SE for the proportion of unemployed women looking for full-time work who had been unemployed for one year or more is 1.9 percentage points ($= (16.5/100) \times 11.3$). Therefore, there are about two chances in three that the proportion of unemployed women looking for full-time work who have been unemployed for one year or more is between 14.6% and 18.4% and 19 chances in 20 that the proportion is within the range 12.7% to 20.3%.

DIFFERENCES

14 Published estimates may also be used to calculate the difference between two survey estimates (of numbers or percentages). Such an estimate is subject to sampling error. The sampling error of the difference between two estimates depends on their SEs and the relationship (correlation) between them. An approximate SE of the difference between two estimates (x-y) may be calculated by the following formula:

$$SE(x-y) = \sqrt{[SE(x)]^2 + [SE(y)]^2}$$

15 While this formula will only be exact for differences between separate and uncorrelated characteristics or subpopulations, it is expected to provide a good approximation for all differences likely to be of interest in this publication.

TECHNICAL NOTE DATA QUALITY *continued*

STANDARD ERRORS

T1 STANDARD ERRORS OF ESTIMATES

Size of estimate (persons)	NSW	Vic.	Qld	SA	WA	Tas.	NT	ACT	Aust.	
	No.	No.	No.	No.	No.	No.	No.	No.	No.	%
100	340	330	250	200	250	130	90	120	120	120.0
200	450	430	370	270	330	180	130	190	220	110.0
300	540	510	450	320	390	220	170	240	300	100.0
500	660	620	570	390	480	270	220	310	440	88.0
700	760	710	670	450	550	310	250	350	550	78.6
1,000	880	810	780	520	630	360	300	380	700	70.0
1,500	1 030	950	930	600	730	410	350	420	890	59.3
2,000	1 150	1 060	1 040	670	820	450	380	440	1 050	52.5
2,500	1 250	1 150	1 150	750	900	500	400	450	1 200	48.0
3,000	1 350	1 250	1 200	800	950	500	450	500	1 300	43.3
3,500	1 450	1 300	1 300	800	1 000	550	450	500	1 400	40.0
4,000	1 500	1 400	1 350	850	1 050	550	500	550	1 500	37.5
5,000	1 650	1 500	1 450	950	1 150	600	550	600	1 700	34.0
7,000	1 850	1 700	1 650	1 050	1 300	700	650	650	1 950	27.9
10,000	2 150	1 950	1 850	1 200	1 500	800	800	800	2 300	23.0
15,000	2 500	2 250	2 050	1 350	1 700	950	1 100	950	2 650	17.7
20,000	2 750	2 500	2 250	1 500	1 900	1 150	1 400	1 100	2 950	14.8
30,000	3 200	2 900	2 600	1 800	2 150	1 450	2 000	1 450	3 350	11.2
40,000	3 550	3 200	2 850	2 050	2 400	1 700	2 500	1 700	3 650	9.1
50,000	3 850	3 500	3 150	2 300	2 650	1 950	3 000	1 900	3 900	7.8
100,000	4 900	4 550	4 300	3 450	3 900	2 750	5 200	2 550	4 900	4.9
150,000	5 750	5 550	5 300	4 400	5 150	3 300	7 150	2 900	5 700	3.8
200,000	6 600	6 450	6 200	5 200	6 150	3 700	8 900	3 050	6 400	3.2
300,000	8 300	8 300	7 850	6 400	7 750	4 200	12 200	3 200	7 600	2.5
500,000	11 650	11 500	10 600	8 000	9 850	4 850	..	3 200	9 550	1.9
1,000,000	17 300	17 500	15 150	10 200	12 600	5 550	13 450	1.3
2,000,000	23 300	25 850	20 350	12 100	14 550	19 550	1.0
5,000,000	29 700	41 350	27 450	13 650	15 200	32 600	0.7
10,000,000	31 800	57 000	32 100	43 500	0.4
15,000,000	49 100	0.3

.. not applicable

T2 LEVELS AT WHICH ESTIMATES HAVE RELATIVE STANDARD ERRORS OF 25% AND 50%(a)

	NSW	Vic.	Qld	SA	WA	Tas.	NT	ACT	Aust.
	no.	no.	no.	no.	no.	no.	no.	no.	no.
25% RSE									
Mean duration of unemployment	13 900	11 700	10 600	5 400	7 700	2 800	1 900	2 900	18 100
Median duration of unemployment	36 800	31 800	27 800	14 800	22 300	10 300	6 400	8 500	35 100
All other estimates	7 800	6 700	6 300	3 200	4 400	1 700	1 300	1 700	8 600
50% RSE									
Mean duration of unemployment	4 600	3 900	3 700	1 800	2 600	1 000	600	1 200	5 700
Median duration of unemployment	12 400	10 700	10 200	5 100	7 600	3 400	2 100	2 800	12 500
All other estimates	2 500	2 200	2 100	1 000	1 400	600	400	700	2 300

(a) Refers to the number of people contributing to the estimate.

GLOSSARY

Active steps taken to find work	<p>Active steps taken by unemployed people in their search for work during the current period of unemployment include:</p> <ul style="list-style-type: none"> ■ wrote, phoned or applied in person to an employer for work ■ answered an advertisement for a job in a newspaper ■ answered an advertisement for a job on the Internet ■ answered an advertisement for a job on Centrelink touchscreens ■ answered an advertisement for a job on workplace noticeboards ■ contacted friends or relatives ■ advertised or tendered for work ■ registered with a Job Network employment agency ■ registered with other employment agency ■ registered with Centrelink as a job seeker.
All difficulties in finding work	All difficulties in finding work experienced by unemployed people during the current period of unemployment.
All steps taken to find work	All steps taken by unemployed people in their search for work during the current period of unemployment.
All steps taken to attain a job	All steps taken to attain a job by people who started their current job in the previous 12 months. Refers to steps taken to attain a job, not necessarily the current job.
Bachelor Degree or above	Bachelor Degree or above includes qualifications at the Post Graduate Degree level, Graduate Diploma and Graduate Certificate level and Bachelor Degree level.
Centrelink	Centrelink is a statutory authority responsible for delivering a range of Commonwealth Government services, including the registration of people for job search assistance and income support.
Certificate not further defined	Survey responses are coded to Certificate not further defined (n.f.d.) when there is not enough information to code them to Certificate I, II, III or IV in the <i>Australian Standard Classification of Education (ASCED), 2001</i> (cat. no. 1272.0), Level of Education classification.
Contributing family workers	People who work without pay in an economic enterprise operated by a relative.
Current job	A job that a person is currently working in, has lasted, or is likely to last for a period of two weeks or more. For people who have commenced more than one job in the previous 12 months, it is the job most recently started.
Duration of current period of unemployment	The period of time from when an unemployed person began looking for work, until the end of the reference week; or the period of time since an unemployed person last worked in any job for two weeks or more, until the end of the reference week; whichever was the shorter period. Brief periods of work (of less than two weeks) since the person began looking for work are disregarded.
Duration of looking for work before current job	The number of weeks or years that employed people were looking for work before being offered their current job or starting their own business. For employed people who had worked before, it includes any time they were looking for work before leaving their previous employer.
Employed	<p>People aged 15 years and over who, during the reference week:</p> <ul style="list-style-type: none"> ■ worked for one hour or more for pay, profit, commission or payment in kind, in a job or business or on a farm (comprising employees, employers and own account workers); or ■ worked for one hour or more without pay in a family business or on a farm (i.e. contributing family workers); or ■ were employees who had a job but were not at work and were: <ul style="list-style-type: none"> ■ away from work for less than four weeks up to the end of the reference week; or

GLOSSARY *continued*

Employed <i>continued</i>	<ul style="list-style-type: none"> ■ away from work for more than four weeks up to the end of the reference week and received pay for some or all of the four week period to the end of the reference week; or ■ away from work as a standard work or shift arrangement; or ■ on strike or locked out; or ■ on workers' compensation and expected to return to their job; or ■ were employers or own account workers who had a job, business or farm, but were not at work.
Employee (excluding OMIEs) job starters	People, excluding those who operate their own incorporated enterprise with or without employees, who work for a public or private employer and receive remuneration in wages, salary, a retainer fee from their employer while working on a commission basis, tips piece rates, or payment in kind and started their current job in the previous 12 months.
Employees	People who work for a public or private employer and receive remuneration in wages, salary, a retainer fee from their employer while working on a commission basis, tips, piece rates, or payment in kind, or people who operate their own incorporated enterprise with or without hiring employees.
Employers	People who operate their own unincorporated economic enterprise or engage independently in a profession or trade, and hire one or more employees.
Employment type in current job	Classifies employed people according to the following categories on the basis of their current job: <ul style="list-style-type: none"> ■ Employees (excluding OMIEs) <ul style="list-style-type: none"> ■ With paid leave entitlements ■ Without paid leave entitlements ■ Owner managers of incorporated enterprises ■ Owner managers of unincorporated enterprises ■ Contributing family workers.
Employment type in main job	For this survey, employment type in main job classifies employed people according to the following categories on the basis of their main job (that is, the job in which the most hours were usually worked): <ul style="list-style-type: none"> ■ Employees (excluding owner managers of incorporated enterprises OMIEs) ■ Owner managers of incorporated enterprises ■ Owner managers of unincorporated enterprises ■ Contributing family workers.
First job ever held lasting two weeks or more	Refers to employees (excluding OMIEs) who had never worked for two weeks or more before starting their current job.
Full-time workers	Employed people who usually worked 35 hours or more a week (in all jobs) and others who, although usually working less than 35 hours a week, worked 35 hours or more during the reference week.
Had worked before	Refers to employees (excluding OMIEs) who had worked before and were either out of work or changed their employer before starting their current job.
Incorporated enterprise	An enterprise which is registered as a separate legal entity to its members or owners (also known as a limited liability company).
Industry	An industry is a group of businesses or organisations that undertake similar economic activities to produce both goods and services. In this publication, industry refers to ANZSIC Division as classified according to the <i>Australian and New Zealand Standard Industrial Classification (ANZSIC), 2006</i> (cat. no. 1292.0).
Job leavers	Unemployed people who have worked for two weeks or more in the past two years and left that job voluntarily.

GLOSSARY *continued*

Job losers	Unemployed people who have worked for two weeks or more in the past two years and left that job involuntarily.
Job Network/Job Services employment agency	The Job Network/Job Services is a national network of private, community and government organisations on contract to the government to provide employment placement services to the community. Job seekers who are registered with Centrelink for job search assistance are able to contact any Job Network provider in their area to receive this service.
Job starters	Employed people who started their current job in the previous 12 months.
Level of highest educational attainment	Level of highest educational attainment identifies the highest achievement a person has attained in any area of study. It is not a measurement of the relative importance of different fields of study but a ranking of qualifications and other educational attainments regardless of the particular area of study or the type of institution in which the study was undertaken. See Appendix 1 for an explanation of how highest level is derived.
Level of highest non-school qualification	Non-school qualifications are awarded for educational attainments other than those of pre-primary, primary or secondary education. They include qualifications at the Post Graduate Degree level, Master Degree level, Graduate Diploma and Graduate Certificate level, Bachelor Degree level, Advanced Diploma and Diploma level, and Certificates I, II, III and IV levels. Non-school qualifications may be attained concurrently with school qualifications.
Long-term unemployed	People whose duration of current period unemployment is 12 months or more.
Main difficulty in finding work	The main difficulty in finding work experienced during the current period of unemployment.
Main English-speaking countries	The list of main English-speaking countries provided here is not an attempt to classify countries on the basis of whether or not English is the predominant or official language of each country. It is a list of the main countries from which Australia receives, or has received, significant numbers of overseas settlers who are likely to speak English. These countries comprise the United Kingdom, the Republic of Ireland, New Zealand, Canada, South Africa and the United States of America.
Main job	The job in which most hours are usually worked.
Mean duration of current period of unemployment	The duration obtained by dividing the aggregate number of weeks a group has been unemployed by the number of people in that group.
Median duration of current period of unemployment	The duration which divides unemployed people into two groups of equal size, one comprising people whose duration of unemployment is above the mid point, and the other, people whose duration is below it.
Number of offers of employment	The number of separate offers of employment received during the current period of unemployment.
Number of spells of looking for work in the previous 12 months	The number of times people reported being out of work and looking for a job during the 12 months up to the end of the reference week.
Occupation	An occupation is a collection of jobs that are sufficiently similar in their title and tasks, skill level and skill specialisation which are grouped together for the purposes of classification. In this publication occupation refers to Major Group as defined by ANZSCO— <i>Australian Standard Classification of Occupations, First Edition, 2006</i> (cat. no. 1220.0).
Own account workers	People who operate their own unincorporated economic enterprise or engaged independently in a profession or trade, and hired no employees.
Owner managers	People who work in their own business, with or without employees, whether or not the business is an incorporated enterprise. Comprises owner managers of incorporated enterprises and owner managers of unincorporated enterprises.

GLOSSARY *continued*

Owner managers of incorporated enterprises (OMIE)	People who work in their own incorporated enterprise, that is, a business entity which is registered as a separate legal entity to its members or owners (also known as a limited liability company). These people are classified as employees under 'status in employment'.
Owner managers of unincorporated enterprises	People who operate their own unincorporated enterprise, that is, a business entity in which the owner and the business are legally inseparable, so that the owner is liable for any business debts that are incurred. Includes those engaged independently in a trade or profession. These people are classified as employers under 'status in employment' if their business has employees, or own account worker if they do not.
Part-time workers	Employed people who usually worked less than 35 hours a week (in all jobs) and who either did so during the reference week, or were not at work in the reference week.
Preferred number of hours	The number of hours unemployed people would like to work each week.
Status in employment	Employed people classified by whether they were employees, employers, own account workers or contributing family workers.
Time spent looking for work in the previous 12 months	The total number of weeks a person has been both out of work and looking for work at the same time during the 12 months up to the end of the reference week.
Unemployed	<p>People aged 15 years and over who were not employed during the reference week, and:</p> <ul style="list-style-type: none"> ■ had actively looked for full-time or part-time work at any time in the four weeks up to the end of the reference week and were available for work in the reference week; or ■ were waiting to start a new job within four weeks from the end of the reference week, and could have started in the reference week if the job had been available then. <p>A small number of people identified as unemployed in the LFS are out of scope for this supplementary survey because they reported that they did not look for work.</p>
Unemployed looking for full-time work	<p>Unemployed people who:</p> <ul style="list-style-type: none"> ■ actively looked for full-time work and were available for work in the reference week; or ■ were not available for work in the reference week because they were waiting to start a new full-time job.
Unemployed looking for part-time work	<p>Unemployed people who:</p> <ul style="list-style-type: none"> ■ actively looked for part-time work only and were available for work in the reference week; or ■ were not available for work in the reference week because they were waiting to start a new part-time job.
Usually worked full-time hours	Employed people who usually worked 35 hours or more a week (in all jobs).
Usually worked part-time hours	Employed people who usually worked less than 35 hours a week (in all jobs).
Whether had prior knowledge that job was available	Whether employed people knew that a job was available with their current employer before making an approach to that employer for a job.
Whether had ever worked for two weeks or more	Whether unemployed people had previously held a job lasting two weeks or more.
Whether out of work prior to starting job	Whether employed people were not employed immediately prior to starting their current job.
Whether preferred to work more hours than usually worked	Whether employed people who usually worked part-time hours, preferred to work more hours.

GLOSSARY *continued*

With paid leave entitlements	The entitlement of employees (excluding OMIEs) to either paid holiday leave or paid sick leave (or both) in their current job. People employed in their own business or who were contributing family workers were not asked questions about paid leave entitlements. For more information, see paragraph 19 of the Explanatory Notes.
Without paid leave entitlements	Employees (excluding OMIEs) who were not entitled to, or did not know whether they were entitled to, paid holiday leave and paid sick leave in their current job. For more information, see paragraph 19 of the Explanatory Notes.

FOR MORE INFORMATION . . .

INTERNET

www.abs.gov.au the ABS website is the best place for data from our publications and information about the ABS.

INFORMATION AND REFERRAL SERVICE

Our consultants can help you access the full range of information published by the ABS that is available free of charge from our website. Information tailored to your needs can also be requested as a 'user pays' service. Specialists are on hand to help you with analytical or methodological advice.

PHONE

1300 135 070

EMAIL

client.services@abs.gov.au

FAX

1300 135 211

POST

Client Services, ABS, GPO Box 796, Sydney NSW 2001

FREE ACCESS TO STATISTICS

All statistics on the ABS website can be downloaded free of charge.

WEB ADDRESS

www.abs.gov.au